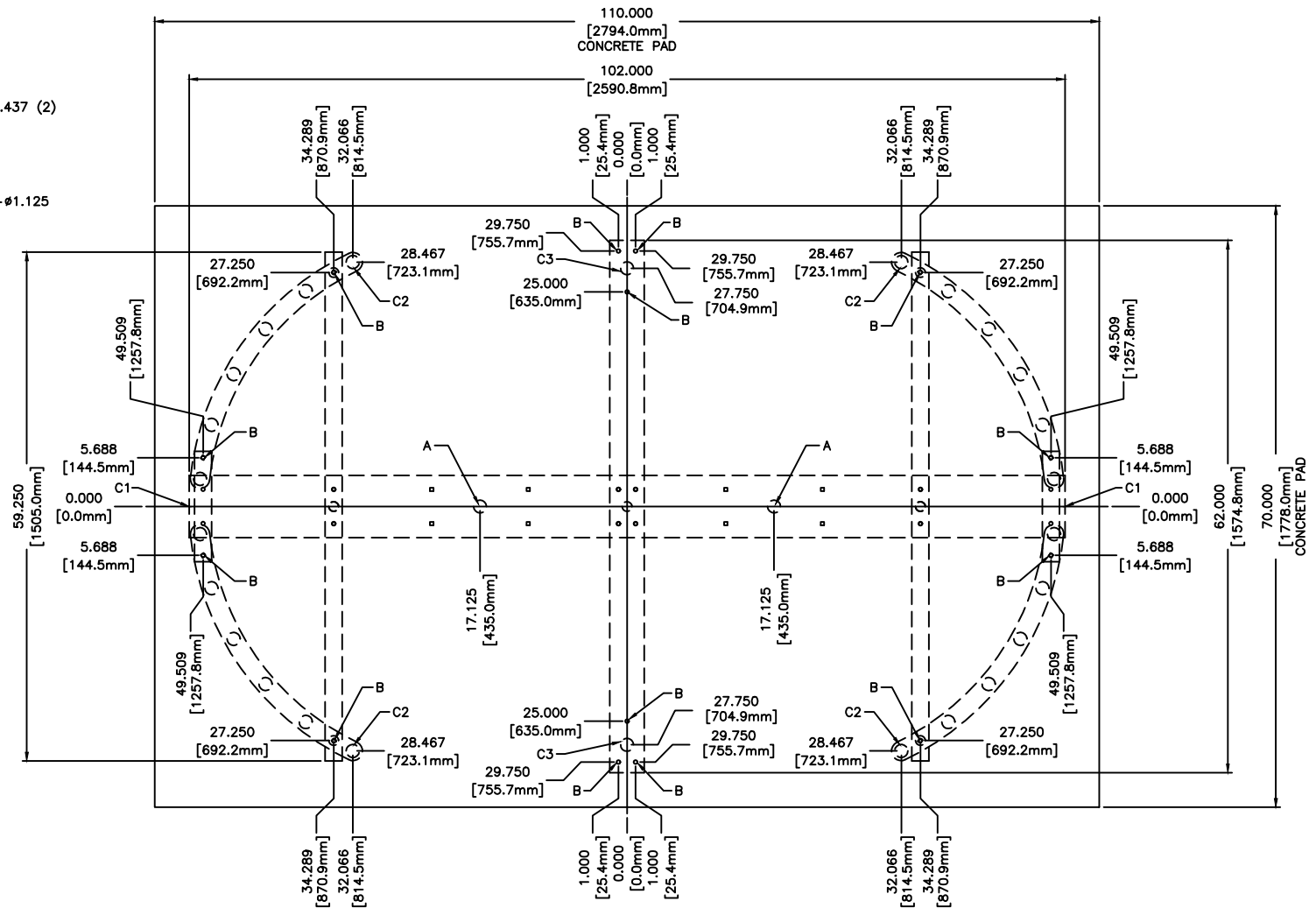
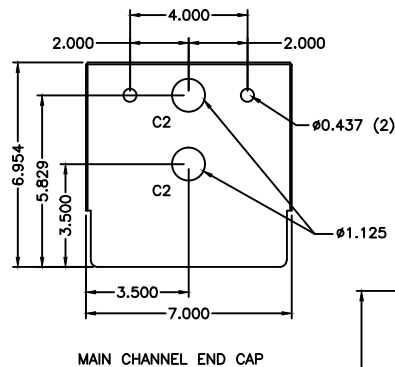


FOR USE ON STAINLESS STEEL DS430-T MODELS



1. ALL DIMENSIONS ARE APPROXIMATE
2. DIMENSIONS ARE IN INCHES (mm)
3. DO NOT SCALE DRAWING

ANCHOR POINTS

A =  $\phi$ .625 X 4.500 STAINLESS STEEL CONCRETE ANCHOR QTY 2  
B =  $\phi$ .375 X 4.500 STAINLESS STEEL CONCRETE ANCHOR QTY 12

SUGGESTED CONDUIT LOCATION

C1 = THROUGH MAIN CHANNEL END CAP (TYP BOTH SIDES)  
C2 = THROUGH VERTICAL YOKE TUBE  
C3 = THROUGH BARRIER VERTICALS

CONCRETE PAD NOTE:

POUR PAD 4.000 [101.6mm] - 6.000 [152.4mm] THICK,  
AND INSURE IT IS LEVEL  $\pm$ .125 [3.1mm]

DSI CONFIDENTIAL  
PROPRIETARY INFORMATION  
This document and the data disclosed  
herein is not to be reproduced, used, or  
disclosed in whole or in part without  
the permission of DESIGNED SECURITY INC.

MATERIAL:	SCALE: 1 = 20	APPROVED BY:	DRAWN BY: LC III
N/A	DATE: 1/10/18		REVISED: 10/2018
FINISH:			
TOL. UNLESS OTHERWISE SPEC.			
.X $\pm$ .1	.XXX $\pm$ .015		
.XX $\pm$ .03	ANGLES .5°		
			330-273-6185 FAX 330-273-4468 USA 1-800-942-0829 FAX 1-800-942-0828
			DS430-T-SS ANCHOR POINTS\CONDUIT 2018