

RYOBI[®]
BY **DETEX**[®]



D-4550 Surface-Mounted Door Closer
Extra-Durable and Lightweight Body
made of R14 Hard High-Silicon Aluminum Alloy

Surface Mounted Door Closer
D-4550 SERIES
Heavy-Duty

GENERAL INFORMATION

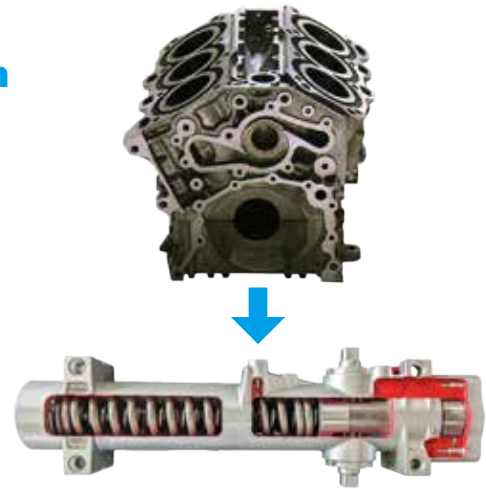
1. The technology behind Ryobi Door Closer

D-4550 Series (and also Semi Heavy-Duty D-3550 Series) is one of the best Heavy-Duty Surface-Mounted Door Closers, with Extra-Durable and Lightweight Body made of R14 Hard High-Silicon Aluminum Alloy, at 1-1/2" diameter cylinder for less dispersing pressure per unit area inside a cylinder to meet various specification requirements.

The R14 Alloy, derived from world-class advanced technologies through manufacturing extensive precision aluminum die-casting components for the automotive industry, cohabits characters of wear-resistance and high machinability, and makes friction less, caused by particles in hydraulic fluid oil. It realizes a life long performance.

2. Principles of Builders' Hardware Division

- (a) Focusing on Door Closing Devices
- (b) Preserving Reputation and Experience
- (c) Quality First
- (d) Universal Design incl. Accessibility (Barrier-Free)
- (e) Global Standard and Uniqueness



3. Model Chart

3-1. Original Set (Heavy-Duty Door Closer Body + Original Regular Arm)

Model No.	Size = Closing Force (ANSI)	Model Selection with Delayed-Action	Applicable Door Size & Weight		
			Approx. Applicable Width		Approx. Applicable Weight
			Exterior	Interior	
D-4550 TP (*2)(*4)	1-6+50%	D-4550DA TP	48"=4'0"(1,219mm)	60"=5'0"(1,524mm)	440lbs (200kgs)
D-4551 TP (*3)(*4)	1-4	D-4551DA TP	36"=3'0"(914mm)	44"=3'8"(1,118mm)	330lbs (150kgs)

(*2) D-4550 TP/D-4550DA TP/D-4551 TP/D-4551DA TP (Tri-Pack) are comprised of Body + Regular Arm (=main arm, forearm, and foot(shoe)) + Parallel Bracket.

(*3) D-4551 Sub-Series are applied to ADA Barrier-Free standard and its mark is stamped on the endplug.

(*4) Closing Power (Force) of Body with Track-Rail Arm as well as Parallel Arm is smaller than the one with Regular Arm.

3-2. Original Arm (*1)

Option of Original Arm by Mounting Application					
Regular(Pull Side)/Top-Jamb(Push Side)			Parallel(Push Side)	Track-Rail(Pull Side)	
1RG(*5)(*6)	1RGL	1RGH	HP	T	HT
(A45-501)	(A45-501L)	(A45-501H)	(A45-503H)	(A45-507T)	(A45-507HT)

(*5) Re suffix and description, please refer to P.4. The parentheses indicate Ryobi part numbers.

(*6) 1RG(A45-501) is comprised of Regular Arm + Parallel Bracket.

3-3. Extra Heavy-Duty Parallel Arm (*2)

Option of Extra Heavy-Duty Parallel Arm by specification					
Parallel(Push Side)					
EDA(*7)	EDA-H	EDA-S	EDA-HS	EDA-CS	EDA-HCS
(A45-505)	(A45-505H)	(A45-505S)	(A45-505HS)	(A45-505CS)	(A45-505HCS)

(*7) Re suffix and description, please refer to P.4. The parentheses indicate Ryobi part numbers.

4.Features, Specifications, Finish/Cover/Furnished Items

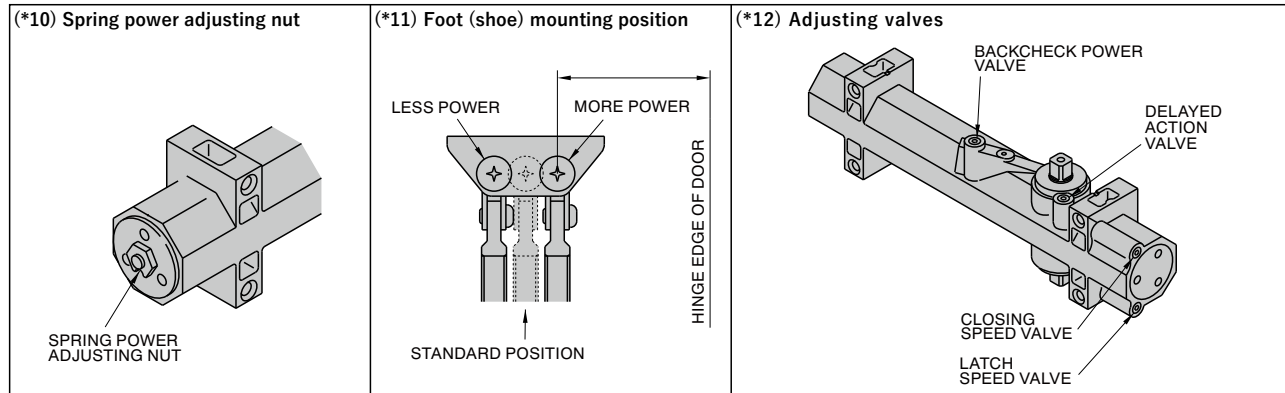
4-1. Features

Advantage	Low Defective Ratio and Low Quality Unevenness Extra-Durable and Lightweight Body made of R14 Hard High-Silicon Aluminum Alloy to exceed the requirement of ANSI/BHMA A156.4-2019 Grade 1, and Extra-Durable Arm made of Forged-Steel (interchangeable between the D-4550 and Semi Heavy-Duty D-3550 Series) High Efficiency (Closing Power(Force)/Opening Power(Force))=about 70% during whole cycle)
Mechanism	Full Fluid Oil Hydraulic Checking Control, All-Season Fluid Latching-Action Rack & Pinion (stable closing speed/latching speed)
General Features	Non-Handed, Single Action Backcheck (standard function) Delayed-Action (optional body) (Model of Advanced Backcheck is available) Hold-Open (optional arm) (Hold-Open Angle and Power are adjustable) Stop (optional arm) (Model of Compression-Stop with rubber cushion is available)
Compliance	(1) ANSI/BHMA A156.4-2019 Grade 1, (2) UL228/UL10C, (3) ADA Barrier Free (D-4551 Sub-Series only)

4-2. Specifications

Adjustment	Closing Power (Closing Force) (by spring power adjusting nut (*10) on the body and foot (shoe) mounting position(*11)) Closing Speed, Latching Speed, and Backcheck Power (Force) (by adjusting valves (*9)(*12) on the body) Delayed-Action Speed (by adjusting valve (*9)(*12) on the body)
Arm Option for mounting application	Regular (pull side) & Top-Jamb (push side) (refer to Model Chart#3-2) Parallel (push side) (refer to Model Chart#3-2/3-3) Track-Rail (pull side) (refer to Model Chart#3-2)
Supplemental Arm Option	Long Rod (optional arm, Top-Jamb only) (refer to Model Chart#3-2) Hold-Open (optional arm) (refer to Model Chart#3-2/3-3) Stop & Compression-Stop (optional arm) (refer to Model Chart#3-3)

(*9) The separate adjustments are equipped with non-critical "V-slot" adjusting valves, which allow for fine tuning of the Closing Speed, Latching Speed, and Backcheck Power (Force), and Delayed-Action Speed.



HOW TO ORDER (Suffix and Description)

1. How to Order

Model (Series)	Size (Sub-Series)	Body Options	Arm Options	Finish Selections
D-455	0: ANSI 1-6+50% 1: ANSI 1-4 (ADA applied)	[no suffix] DA : Delayed-Action AVB: Advanced-Backcheck (D-4550 Sub-Series only) MC: Metal Cover	TP (Tri-Pack) 1RG 1RGL 1RGH HP T HT EDA EDA-H EDA-S EDA-HS EDA-CS EDA-HCS	AL689 (Aluminum-Silver Painted) DB695 (Dark-Bronze Painted) BL693 (Black painted) Others (optional)

2. Arm Options

Suffix	Description	Internal use only		
		Ryobi Part Number	Inboxing	UL Labeling
TP	(Original) Regular (Standard) Arm + Parallel Bracket	-	No	Yes (R)
1RG	(Original) Regular (Standard) Arm	A45-501 RG	Yes (D)	Yes (D)
1RGL	(Original) Regular (Standard) Arm with Long Rod Forearm non-assembled for Top-Jamb Mounting Application	A45-501L RG NA	Yes (D)	Yes (D)
1RGH	(Original) Regular (Standard) Arm with Hold-Open	A45-501H RG	Yes (D)	No
HP	(Original) Parallel Arm with Hold-Open	A45-503H PR	Yes (D)	No
T	(Original) Track-Rail Arm	A45-507T TR	Yes (D)	Yes (D)
HT	(Original) Track-Rail Arm with Hold-Open	A45-507HT TR	Yes (D)	No
EDA	Extra Heavy-Duty Parallel Arm	A45-505 EDA PR	Yes (D)	Yes (D)
EDA-H	Extra Heavy-Duty Parallel Arm with Hold-Open	A45-505H EDA PR	Yes (D)	No
EDA-S	Extra Heavy-Duty Parallel Arm with Stop	A45-505S EDA PR	Yes (D)	Yes (D)
EDA-HS	Extra Heavy-Duty Parallel Arm with Hold-Open and Stop	A45-505HS EDA PR	Yes (D)	No
EDA-CS	Extra Heavy-Duty Parallel Arm with Compression-Stop (with rubber cushion)	A45-505CS EDA PR	Yes (D)	Yes (D)
EDA-HCS	Extra Heavy-Duty Parallel Arm with Hold-Open and Compression-Stop (with rubber cushion)	A45-505HCS EDA PR	Yes (D)	No

D: Detex, R: Ryobi

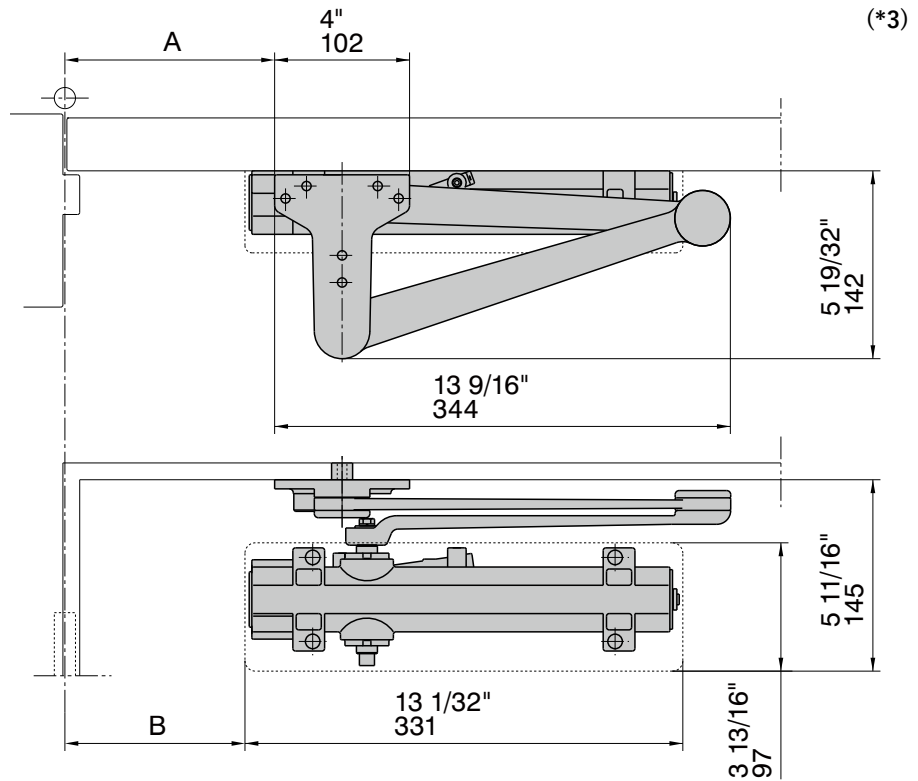
3. Accessory Options

Suffix	Description	Internal use only		
		Ryobi Part Number	Inboxing	UL Labeling
P45-180	Heavy-Duty Drop Plate	P45-180 HD DPL	No	No
P45-180D	Heavy-Duty Drop Plate (Deeper)	P45-180D HD DPL	No	No
P45-4040	Retrofit Plate to mount to LCN 4040 Hole Pattern	P45-4040 RPL	No	No
P45-113	Offset Plate	P45-113 OPL	No	No
P45-110	(Original) Spacer Block for Parallel Bracket	P45-110 SBL	No	No
P45HD-110	Heavy-Duty Spacer Block for Parallel Bracket	P45HD-110 HD SBL	No	No
P45-114	(Original) Angle Bracket for Parallel Bracket	P45-114 ABR-PB	No	No
P45HD-114	Heavy-Duty Angle Bracket for Parallel Bracket	P45HD-114 HD ABR-PB	No	No
P45HD-112	Heavy-Duty Angle Bracket for Foot (Shoe) Support	P45HD-112 ABR-SS	No	No
P45-190	Angle Bracket for Top-Jamb Application	P45-190 ABR-TJ	No	No
MC-455	Metal Cover Satin Stainless Hairline (optional)	MC4550-630 S/S-H	No	No

MOUNTING APPLICATION

■ Heavy-Duty Parallel Arm Application (Push Side)

	MAXIMUM DOOR OPENING	
	120°	180°
A	7 3/8" (187mm)	4 5/8" (117mm)
B	6 1/2" (165mm)	3 3/4" (95mm)



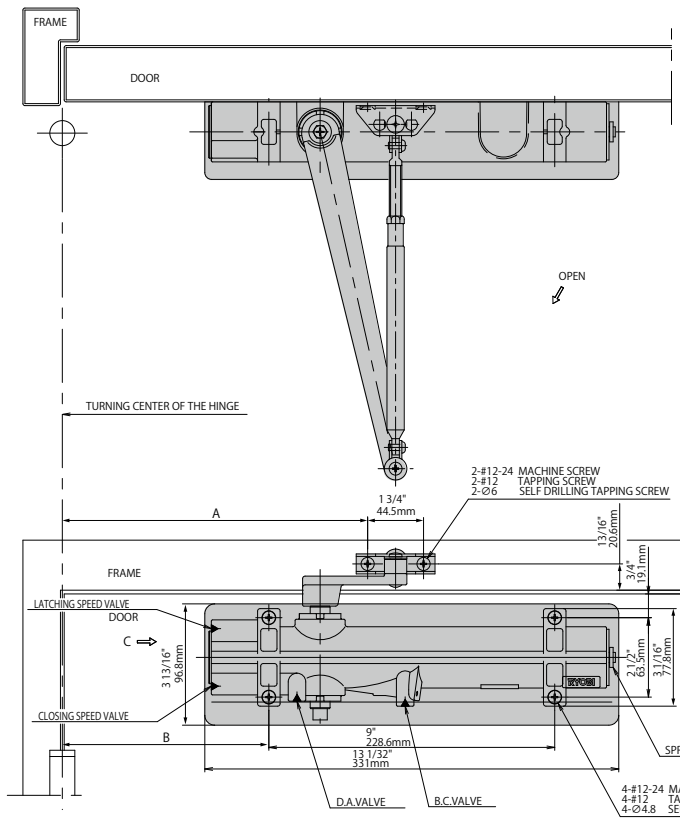
GENERAL INFORMATION (continued)

4-3. Finish/Cover/Furnished Items

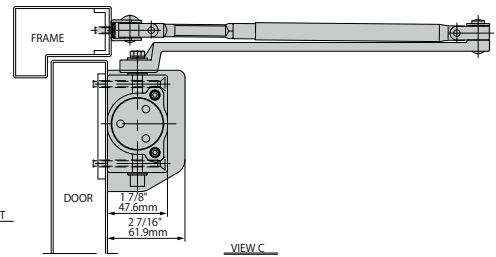
Finish	Aluminum-Silver painted, Dark-Bronze painted, or Black painted (selectional), Other Finishes (optional)
Cover	Plastic Cover (original), Metal Cover (optional)
Furnished Items	Fasteners (machine screws, tapping screws, self-drilling tapping screws, hex key for valve, hex wrench for nut) Parallel Bracket for Tri-Pack/A45-501 to be applied to both mounting applications of "Regular Arm" and "Parallel Arm" Installation Instructions, and Template

MOUNTING APPLICATION (continued)

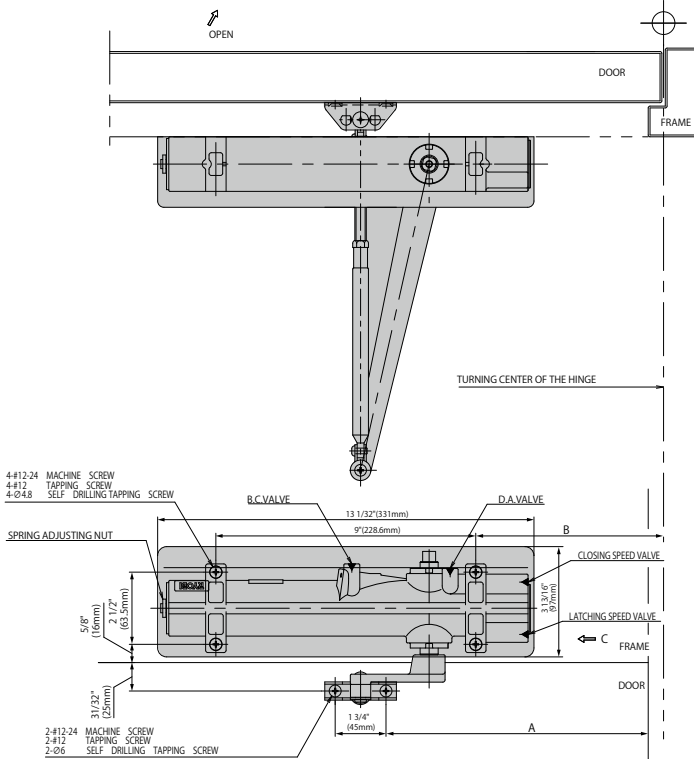
Regular Arm Application (Pull Side)



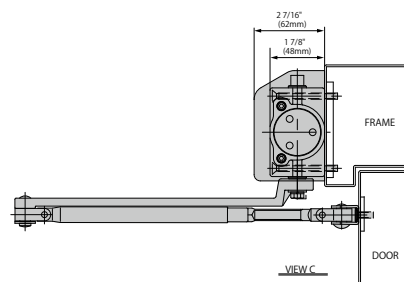
	MAXIMUM DOOR OPENING	
	120°	180°
A	11 5/8" (295.3mm)	9 5/8" (244.5mm)
B	8 1/2" (215.9mm)	6 1/2" (165.1mm)



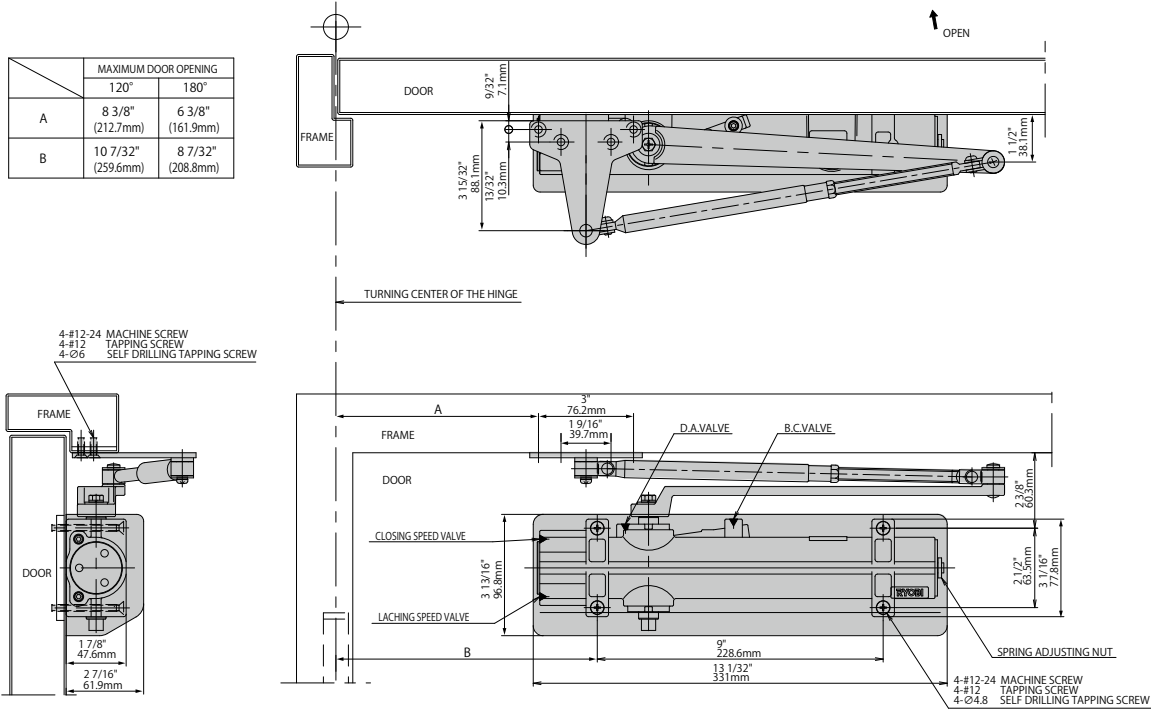
Top-Jamb Application (Push Side with Regular Arm with Long Rod Forearm)



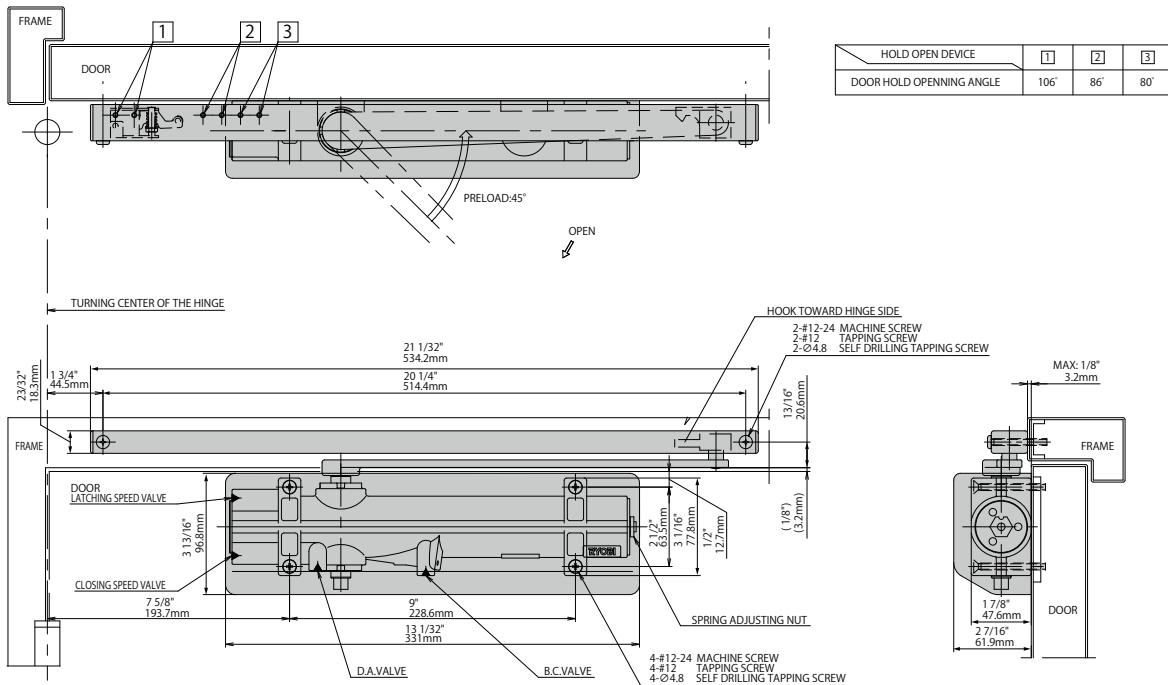
	MAXIMUM DOOR OPENING	
	120°	180°
A	11 5/8" (295mm)	9 5/8" (244mm)
B	8 1/2" (216mm)	6 1/2" (165mm)



Parallel Arm Application (Push Side)



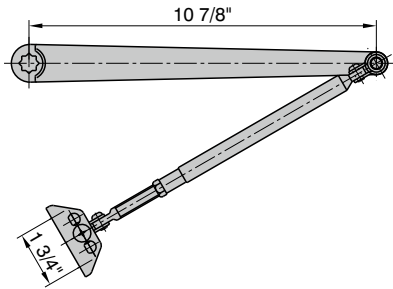
Track-Rail Arm Application (Pull Side)



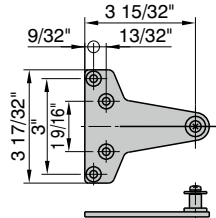
ARM OPTIONS

■ Regular Arm [A45-501]

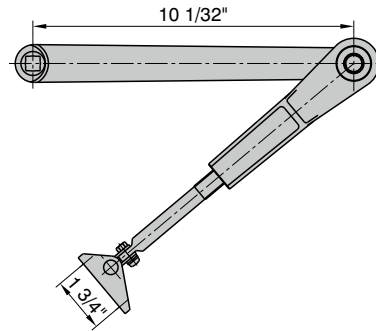
(Regular Arm with Long Rod Forearm [A45-501L])



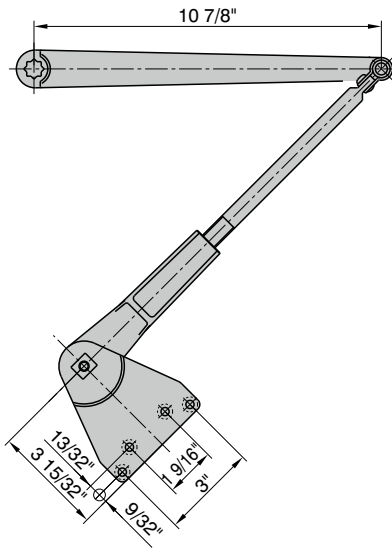
Parallel Bracket for Tri-Pack



■ Regular Arm with Hold-Open [A45-501H]

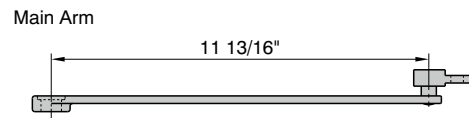


■ Parallel Arm with Hold-Open [A45-503H]



■ Track-Rail Arm [A45-507T]

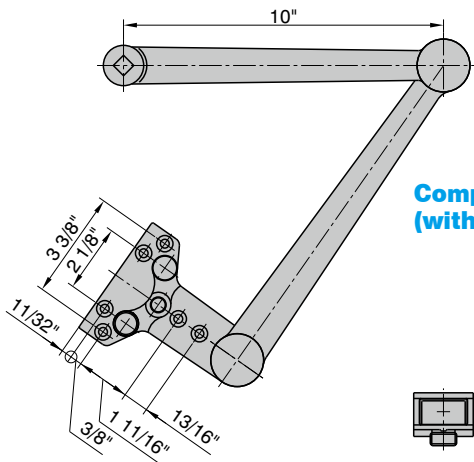
(Track-Rail Arm with Hold-Open [A45-507HT])



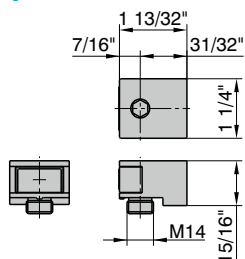
■ Extra Heavy-Duty Parallel Arm with Stop [A45-505S]

(Extra Heavy-Duty Parallel Arm [A45-505])

(Extra Heavy-Duty Parallel Arm with Compression-Stop [A45-505CS])



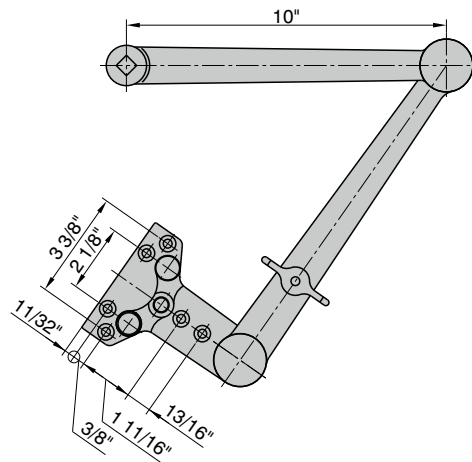
Compression-Stop (with rubber cushion)



■ Extra Heavy-Duty Parallel Arm with Hold-Open and Stop [A45-505HS]

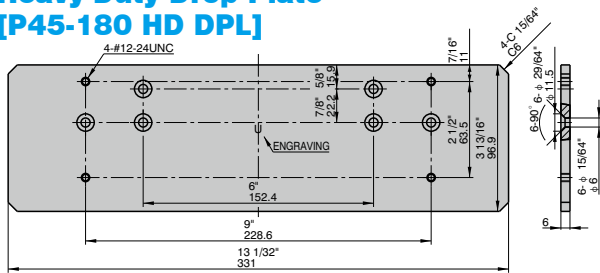
(Extra Heavy-Duty Parallel Arm with Hold-Open [A45-505H])

(Extra Heavy-Duty Parallel Arm with Hold-Open and Compression-Stop [A45-505HCS])

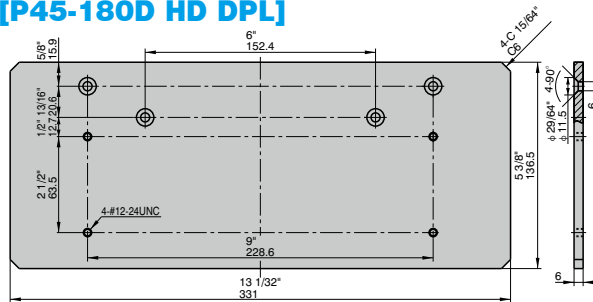


ACCESSORY OPTIONS

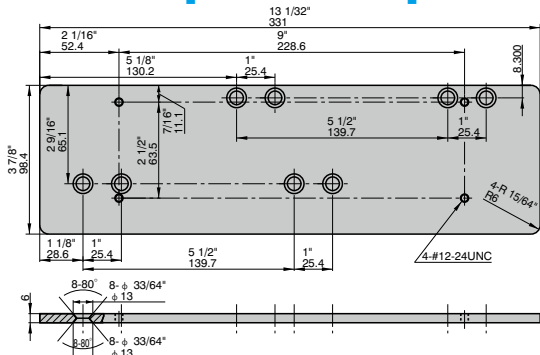
■ Heavy-Duty Drop Plate [P45-180 HD DPL]



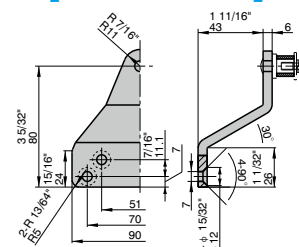
■ Heavy-Duty Drop Plate (Deeper) [P45-180D HD DPL]



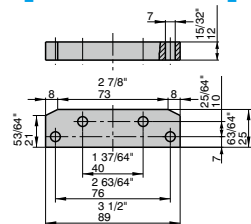
■ Retrofit Plate [P45-4040 RPL]



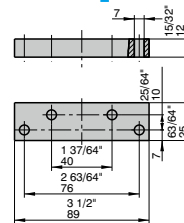
■ Offset Plate [P45-113 OPL]



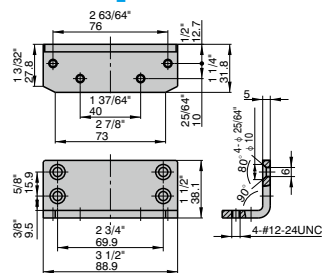
■ Spacer Block [P45-110 SBL]



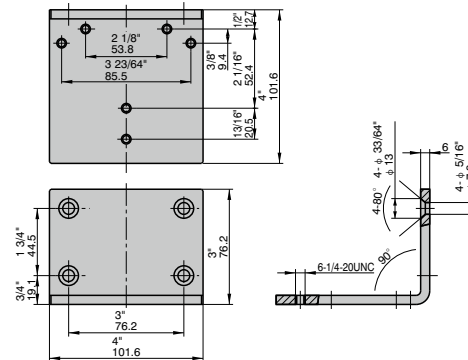
■ Heavy-Duty Spacer Block [P45HD-110 HD SBL]



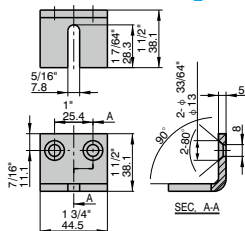
■ Angle Bracket for Parallel Bracket [P45-114 ABR-PB]



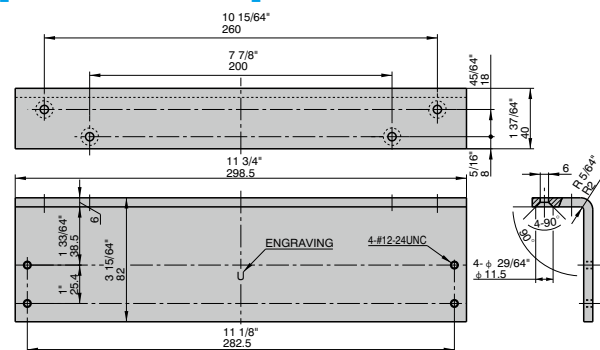
■ Heavy-Duty Angle Bracket for Parallel Bracket [P45HD-114 HD ABR-PB]



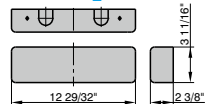
■ Angle Bracket for Foot (Shoe) Support [P45HD-112 HD ABR-SS]



■ Angle Bracket for Top-Jamb [P45-190 ABR-TJ]



■ Metal Cover Satin Stainless Hairline (optional) [MC4550-630 S/S-H]



PART NUMBER AND DESCRIPTION

1.D-4550 SERIES Door Closer, Aluminum-Silver painted

PART NUMBER	DESCRIPTION	Internal use only	
		Ryobi Part Number (body/arm)	
a.			
D-4550-TP-AL D-4550DA-TP-AL	Heavy-Duty SMDC, Tri-Pack (Body + Regular Arm + Parallel Bracket), AL689 Heavy-Duty SMDC, Tri-Pack (Body with DA + Regular Arm + Parallel Bracket), AL689	D-4550 TP D-4550DA TP	
b.			
D4550-1RG-AL D4550-1RGL-AL D4550-1RGH-AL D4550-HP-AL D4550-T-AL D4550-HT-AL	Heavy-Duty SMDC Body + Regular Arm, AL689 Heavy-Duty SMDC Body + Regular Arm with Long Rod NA for TJ, AL689 Heavy-Duty SMDC Body + Regular Arm with Hold-Open, AL689 Heavy-Duty SMDC Body + Parallel Arm with Hold-Open, AL689 Heavy-Duty SMDC Body + Track-Rail Arm, AL689 Heavy-Duty SMDC Body + Track Rail Arm with Hold-Open, AL689	DB4550 DB4550 DB4550 DB4550 DB4550 DB4550	A45-501 (RG) A45-501L (RG NA) A45-501H (RG) A45-503H (PR) A45-507T (TR) A45-507HT (TR)
c.			
D4550-EDA-AL D4550-EDA-H-AL D4550-EDA-S-AL D4550-EDA-HS-AL D4550-EDA-CS-AL D4550-EDA-HCS-AL	Heavy-Duty SMDC Body + EDA, AL689 Heavy-Duty SMDC Body + EDA with Hold-Open, AL689 Heavy-Duty SMDC Body + EDA with Stop, AL689 Heavy-Duty SMDC Body + EDA with Hold-Open and Stop, AL689 Heavy-Duty SMDC Body + EDA with Compression-Stop, AL689 Heavy-Duty SMDC Body + EDA with Hold-Open and Compression Stop, AL689	DB4550 DB4550 DB4550 DB4550 DB4550 DB4550	A45-505 (EDA PR) A45-505H (EDA PR) A45-505S (EDA PR) A45-505HS (EDA PR) A45-505CS (EDA PR) A45-505HCS (EDA PR)
d.			
D4550DA-1RG-AL D4550DA-1RGL-AL D4550DA-1RGH-AL D4550DA-HP-AL D4550DA-T-AL D4550DA-HT-AL	Heavy-Duty SMDC Body with DA + Regular Arm, AL689 Heavy-Duty SMDC Body with DA + Regular Arm with Long Rod NA for TJ, AL689 Heavy-Duty SMDC Body with DA + Regular Arm with Hold-Open, AL689 Heavy-Duty SMDC Body with DA + Parallel Arm with Hold-Open, AL689 Heavy-Duty SMDC Body with DA + Track-Rail Arm, AL689 Heavy-Duty SMDC Body with DA + Track Rail Arm with Hold-Open, AL689	DB4550DA DB4550DA DB4550DA DB4550DA DB4550DA DB4550DA	A45-501 (RG) A45-501L (RG NA) A45-501H (RG) A45-503H (PR) A45-507T (TR) A45-507HT (TR)
e.			
D4550DA-EDA-AL D4550DA-EDA-H-AL D4550DA-EDA-S-AL D4550DA-EDA-HS-AL D4550DA-EDA-CS-AL D4550DA-EDA-HCS-AL	Heavy-Duty SMDC Body with DA + EDA, AL689 Heavy-Duty SMDC Body with DA + EDA with Hold-Open, AL689 Heavy-Duty SMDC Body with DA + EDA with Stop, AL689 Heavy-Duty SMDC Body with DA + EDA with Hold-Open and Stop, AL689 Heavy-Duty SMDC Body with DA + EDA with Compression-Stop, AL689 Heavy-Duty SMDC Body with DA + EDA with Hold-Open and Compression Stop, AL689	DB4550DA DB4550DA DB4550DA DB4550DA DB4550DA DB4550DA	A45-505 (EDA PR) A45-505H (EDA PR) A45-505S (EDA PR) A45-505HS (EDA PR) A45-505CS (EDA PR) A45-505HCS (EDA PR)

2.D-4551 Sub-Series Door Closer, Aluminum-Silver painted

PART NUMBER	DESCRIPTION	Internal use only	
		Ryobi Part Number (body/arm)	
f.			
D-4551-TP-AL D-4551DA-TP-AL	Heavy-Duty SMDC, Tri-Pack (Body + Regular Arm + Parallel Bracket), ADA, AL689 Heavy-Duty SMDC, Tri-Pack (Body with DA + Regular Arm + Parallel Bracket), ADA, AL689	D-4551 TP ADA D-4551DA TP ADA	
g.			
D4551-1RG-AL D4551-1RGL-AL D4551-1RGH-AL D4551-HP-AL D4551-T-AL D4551-HT-AL	Heavy-Duty SMDC Body + Regular Arm, ADA, AL689 Heavy-Duty SMDC Body + Regular Arm with Long Rod NA for TJ, ADA, AL689 Heavy-Duty SMDC Body + Regular Arm with Hold-Open, ADA, AL689 Heavy-Duty SMDC Body + Parallel Arm with Hold-Open, ADA, AL689 Heavy-Duty SMDC Body + Track-Rail Arm, ADA, AL689 Heavy-Duty SMDC Body + Track Rail Arm with Hold-Open, ADA, AL689	DB4551 ADA DB4551 ADA DB4551 ADA DB4551 ADA DB4551 ADA DB4551 ADA	A45-501 (RG) A45-501L (RG NA) A45-501H (RG) A45-503H (PR) A45-507T (TR) A45-507HT (TR)
h.			
D4551-EDA-AL D4551-EDA-H-AL D4551-EDA-S-AL D4551-EDA-HS-AL D4551-EDA-CS-AL D4551-EDA-HCS-AL	Heavy-Duty SMDC Body + EDA, ADA, AL689 Heavy-Duty SMDC Body + EDA with Hold-Open, ADA, AL689 Heavy-Duty SMDC Body + EDA with Stop, ADA, AL689 Heavy-Duty SMDC Body + EDA with Hold-Open and Stop, ADA, AL689 Heavy-Duty SMDC Body + EDA with Compression-Stop, ADA, AL689 Heavy-Duty SMDC Body + EDA with Hold-Open and Compression Stop, ADA, AL689	DB4551 ADA DB4551 ADA DB4551 ADA DB4551 ADA DB4551 ADA DB4551 ADA	A45-505 (EDA PR) A45-505H (EDA PR) A45-505S (EDA PR) A45-505HS (EDA PR) A45-505CS (EDA PR) A45-505HCS (EDA PR)

PART NUMBER AND DESCRIPTION

(continued)



2.D-4551 Sub-Series Door Closer, Aluminum-Silver painted (continued)

PART NUMBER	DESCRIPTION	Internal use only	
		Ryobi Part Number (body/arm)	
i.			
D4551DA-1RG-AL	Heavy-Duty SMDC Body with DA + Regular Arm, ADA, AL689	DB4551DA ADA	A45-501 (RG)
D4551DA-1RGL-AL	Heavy-Duty SMDC Body with DA + Regular Arm with Long Rod NA for TJ, ADA, AL689	DB4551DA ADA	A45-501L (RG NA)
D4551DA-1RGH-AL	Heavy-Duty SMDC Body with DA + Regular Arm with Hold-Open, ADA, AL689	DB4551DA ADA	A45-501H (RG)
D4551DA-HP-AL	Heavy-Duty SMDC Body with DA + Parallel Arm with Hold-Open, ADA, AL689	DB4551DA ADA	A45-503H (PR)
D4551DA-T-AL	Heavy-Duty SMDC Body with DA + Track-Rail Arm, ADA, AL689	DB4551DA ADA	A45-507T (TR)
D4551DA-HT-AL	Heavy-Duty SMDC Body with DA + Track Rail Arm with Hold-Open, ADA, AL689	DB4551DA ADA	A45-507HT (TR)
j.			
D4551DA-EDA-AL	Heavy-Duty SMDC Body with DA + EDA, ADA, AL689	DB4551DA ADA	A45-505 (EDA PR)
D4551DA-EDA-H-AL	Heavy-Duty SMDC Body with DA + EDA with Hold-Open, ADA, AL689	DB4551DA ADA	A45-505H (EDA PR)
D4551DA-EDA-S-AL	Heavy-Duty SMDC Body with DA + EDA with Stop, ADA, AL689	DB4551DA ADA	A45-505S (EDA PR)
D4551DA-EDA-HS-AL	Heavy-Duty SMDC Body with DA + EDA with Hold-Open and Stop, ADA, AL689	DB4551DA ADA	A45-505HS (EDA PR)
D4551DA-EDA-CS-AL	Heavy-Duty SMDC Body with DA + EDA with Compression-Stop, ADA, AL689	DB4551DA ADA	A45-505CS (EDA PR)
D4551DA-EDA-HCS-AL	Heavy-Duty SMDC Body with DA + EDA with Hold-Open and Compression Stop, ADA, AL689	DB4551DA ADA	A45-505HCS (EDA PR)

3. Notes

TP: Tri-Pack (Door Closer Body + Regular Arm + Parallel Bracket)

HD: Heavy-Duty

SM: Surface-Mounted

DC: Door Closer

RG: Regular (Standard) Arm

NA: Non-Assembled

TJ: Top-Jump Mounting Application

PR: Parallel Arm

TR: Track-Rail Arm

DA: Delayed-Action

AL689 : Aluminum-Silver Painted

DB695 : Dark-Bronze painted

BL693 : Black painted

ADA: ADA Barrier Free standard Applied

EDA: Extra Heavy-Duty Parallel Arm

COMPLIANCE

- (1) **Quality-Rated** The D-4550 Series Door Closers have been certified and complied with "ANSI/BHMA A156.4-2019 Standard for Door Controls - Closers" as "Grade 1"
- (2) **Fire-Rated** (a) The D-4550 Series Door Closers have been certified in the file number R7525 of UL/cUL as "Swinging Fire Door Closers" to meet the UL 228 (Standard for Door Closers-Holders, With or Without Integral Smoke Detectors)

 (b) The D-4550 Series Door Closers have been certified in the file number R7525 of UL/cUL as "Swinging Fire Door Closers" for "Self-Closing Doors without Hold-Open feature" to meet the UL 10C (Standard for Positive Pressure Fire Tests of Door Assemblies)
- (3) **Disability-Rated** The D-4551 Sub-Series Door Closers have been applied to ADA Barrier Free standard (to meet entrance accessibility requirements of 5lbf (pound-force) opening force or less).
- (4) **Limited Warranty** 25-year from the date of manufacture

CONTACT

1. USA/Canada

DETEX CORPORATION

302 Detex Drive, New Braunfels, TX78130

TEL: +1-800-729-3839, FAX: +1-800-653-3839

<https://www.ryobibydetex.com>

<https://www.detex.com/products/life-safety-security-door-hardware/ryobi-door-closers/>



QR code for on-the-spot access
to instructions and informations

2. Manufacturer

RYOBI LIMITED (Builders' Hardware Division)

5-2-8 Toshima, Kita-Ku, Tokyo 114-8518, JAPAN

TEL: +81-3-3927-5536, FAX: +81-3-3927-5527

<https://www.ryobi-group.co.jp/en/builder/>