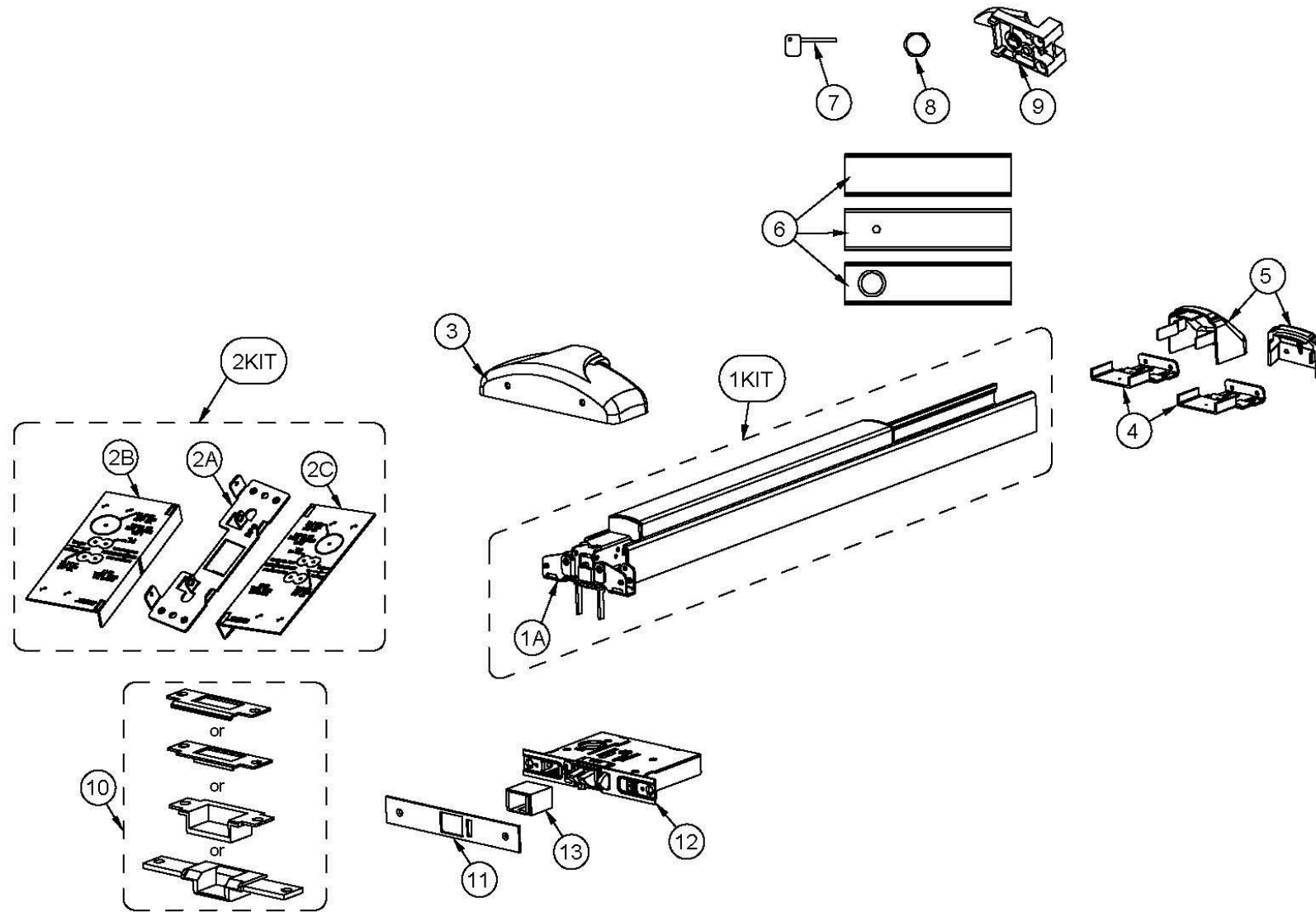




30 Series Parts List

For Mechanical Devices Only



Item	Order Part#	Description	Price
1KIT	105500-99	Centercase/Pushpad SubAssembly (includes 1A)	\$626.28
1A	100698-2	Centercase Assembly, Wide Stile	\$176.56
2KIT	103806-9	Mounting Plate/Strike Locator Kit, Mortise (includes 2A, 2B & 2C)	\$84.33
2A	103215	Mounting Plate, BP9	\$59.29
2B	103284	Template, RHR, Mortise	\$55.62
2C	103285	Template, LHR, Mortise	\$55.62
3	102353-1	Centercase Cover, Stainless Steel, Wide, 10 series, 630	\$372.65
	104601-1	Centercase Cover, Aluminum, Wide, 10 series, 628	\$85.65
4	100147	Endcap bracket for EC1 (ramped) endcap w/o battery holder	\$14.49
	101093	Endcap bracket for EC1 (ramped) endcap w/ battery holder	\$19.77
	104303	Endcap bracket for EC2 (flush) endcap w/o battery holder	\$39.53
	104636	Endcap bracket for EC2 (flush) endcap w/ battery holder	\$39.53
5	101642-9	Endcap, EC1 (ramped) Stainless Steel, 630	\$98.83
	104304-9	Endcap, EC2 (flush) Stainless Steel, 630	\$90.92
	104612-1	Endcap, EC2 (flush) Aluminum, 628	\$143.62
6	100408-9	Fillerplate, Subassembly, S&R, Less Dogging, LD, 10 series, 36"	\$48.76
	100194-9	Fillerplate, Subassembly, S&R, Hex Dogging, HD, 10 series, 36"	\$59.29
	100179-9	Fillerplate, Subassembly, S&R, Cylinder Dogging, CD, 10 series, 36"	\$77.74
7	100450	Hex Key (for Hex Dogging)	\$8.00
8	100783	Cylinder Nut (for Cylinder Dogging)	\$7.00
9	102216-2	Hex Dogging Assembly	\$23.72
	102216	Cylinder Dogging Assembly	\$77.00
10	103285-9	Strike Kit, ANSI, 630 (includes hardware)	\$44.50
	103294-9	Strike Kit, ANSI, flat lip, 630 (includes hardware)	\$44.50
	103286-9	Strike Kit, Double door, short open back, 630 (includes hardware)	\$188.00
	103289-9	Strike Kit, Double door, long open back, 630 (includes hardware)	\$188.00
11	103203-9	Front plate, 630	\$83.43
12	103320-1	Mortise lock, standard	\$699.94
	103280-2	Mortise lock, EE	\$1,071.24
13	103273	Latchbolt block	\$30.03

NOTE: Your particular part or configuration may not be shown: Contact Detex technical support at 800-729-3839 (option 2)

