



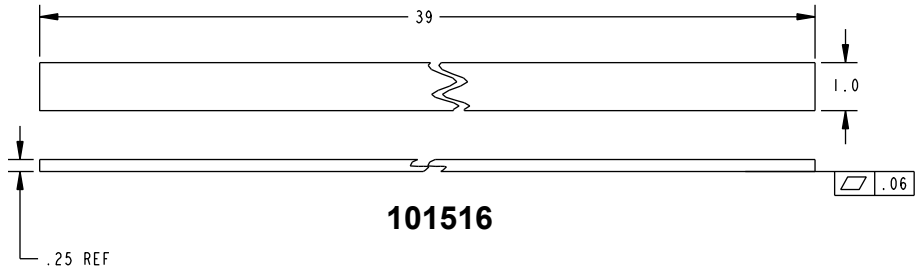
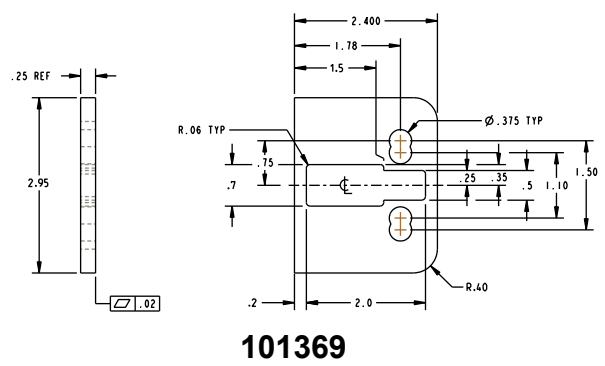
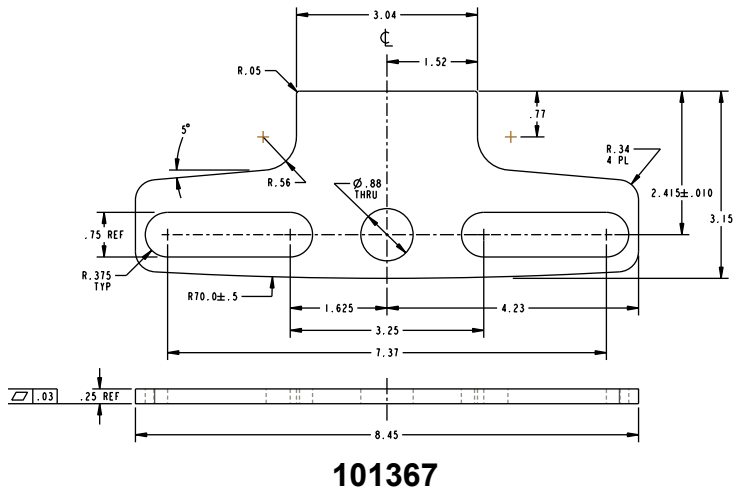
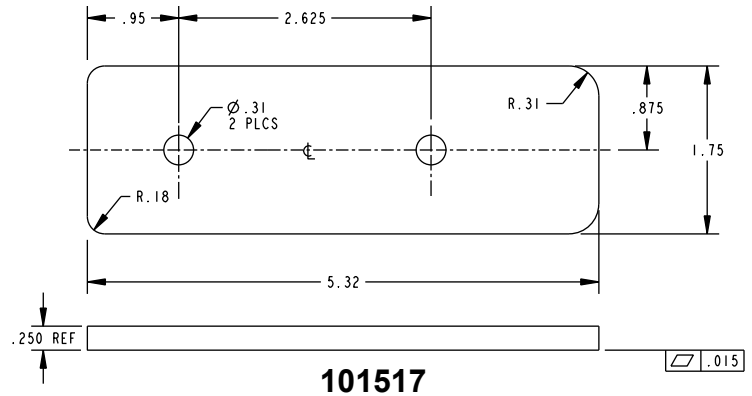
## GB10 Glass Bead Kits

The GB10 glass bead kit is used as a 1/4" shim for flush doors with light kit moldings. The GB10 is for use with the Advantex 51 Series Top Rod Only Narrow Stile Surface Vertical Rod Exit Device at an 8-foot height.

### Glass Bead Kit For EC1 Endcap

Included in this kit:

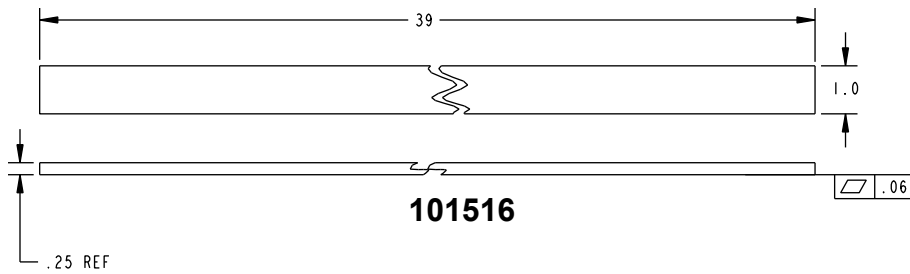
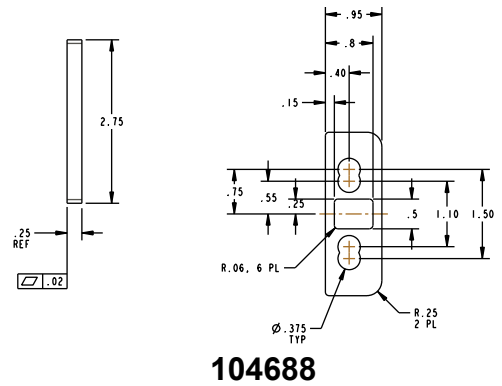
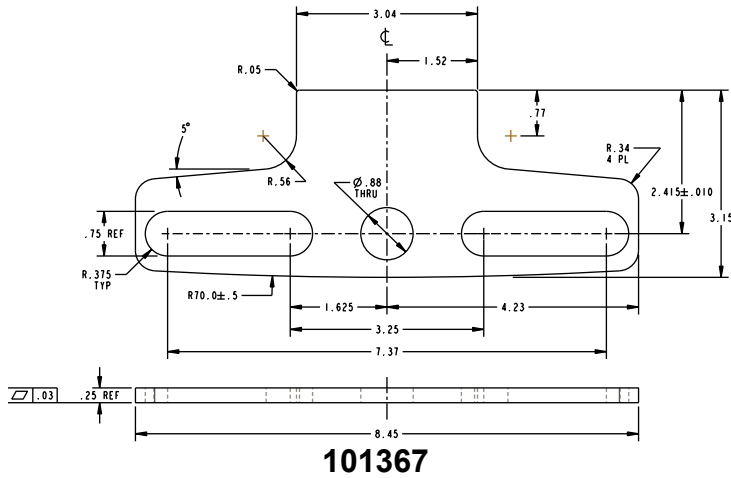
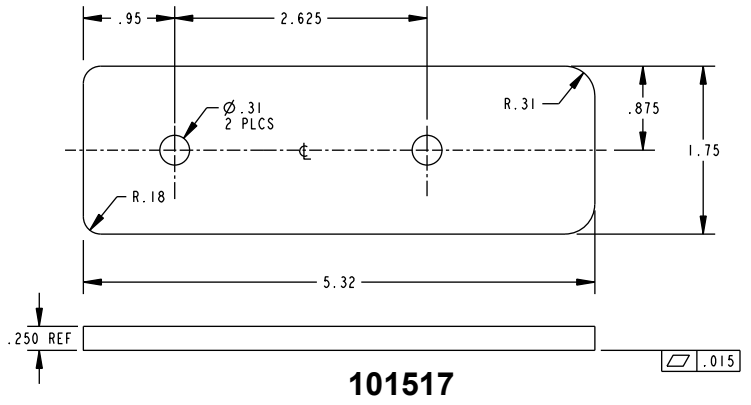
- 1x- 101517
- 2x- 101516
- 1x- 101367
- 1x- 101369



**Glass Bead Kit For EC2 Endcap**

Included in this kit:

- 1x- 101517
- 4x- 101516
- 1x- 101515
- 1x- 101368
- 1x- 101369



Detex Corporation  
 302 Detex Drive  
 New Braunfels, Texas 78130-3045 USA  
 PH. (830) 629-2900  
 (800) 729-3839  
 FAX (800) 653-3839  
<http://www.detex.com>  
 USA Sales:  
[marketing@detex.com](mailto:marketing@detex.com)  
 International Sales:  
[export@detex.com](mailto:export@detex.com)

Cancer & Reproductive Harm - [www.detex.com/prop65](http://www.detex.com/prop65)