

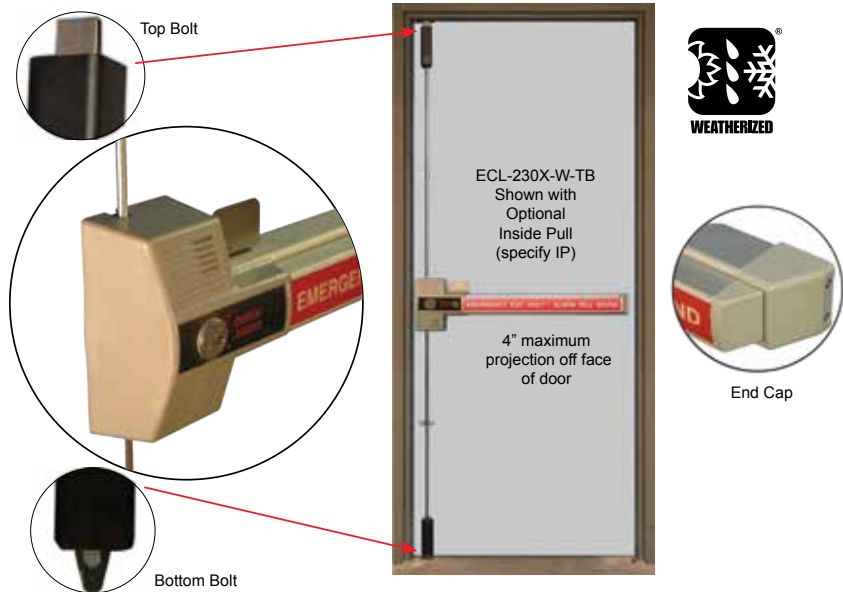
# EXIT CONTROL LOCKS

## ECL-230X-W-TB (Weatherized Top and Bottom Bolt)

### Exit Control Hardware (Double Door Application)

The ECL-230X-W-TB is a **code compliant, battery alarmed, rugged 2-point dead bolt**, panic device with **photo-luminescent sign** providing maximum security and a **100 decibel alarm** for **secondary exits**.

This device conforms to UL1034-34 Temperature Section 34, UL1034-54 Dust Section 54, MIL-STD 810F, Method 506.4 (driving rain test); MIL-STD 810F and Method 509.4 (salt fog test).



#### Benefits

- Attack resistant design for maximum holding force
- Weather resistant design for use in outdoor or wet environments
- Proven durability and reliability at a reasonable price
- Easy to install
- Reduces employee and customer theft
- Time tested construction resists attack from the inside
- Easy to see if the lights go out
- For additional security with 5 locking points, specify ECL-230X-W-TB-DX3
- Straightforward operation that everyone understands
- One size fits 36"-48" doors for code compliant acceptance

#### Features

- 2-point, 3/4" throw top and bottom locks with just over 5/8" engagement with the strike
- Corrosion resistant alloy lock body
- 100 decibel alarm, powered by 9-volt battery (included)
- Surface/flush reversible strike
- Cover Lock
- Accepts 5-pin through 7-pin standard and interchangeable core rim cylinders without using cylinder collar
- Durable photo-luminescent sign absorbs light to then "glow in the dark" when lights are dimmed
- Locking and unlocking (dead bolt) always arms and disarms the alarm
- Non-handed
- Low profile meets International Building Code requirement allowing for 4" maximum projection off face of door
- Resetting the alarm can only be accomplished with a control key
- For 9VDC hardwiring add BE-961-1 or BE-961-2

#### Mechanical Options

- Gray Finish (Std.)  
Note: Contact factory for additional finishes
  - H - Hurricane Rated
  - 84" - Fits 6'8" to 7' door
  - 96" - Fits 7' to 8' door
  - 120" - Fits 8' to 10' door
  - 30 - Fits 30" wide door
  - IP - Inside Pull
  - SS - Security Screws
  - CL-SS - Cover Lock & Security Screws
  - DX1 - Add hinge side protection with one hinge bolt for 3 locking points (3/4" frame engagement)
  - DX2 - Add hinge side protection with two hinge side bolts for 4 locking points (3/4" frame engagement)
  - DX3 - For maximum hinge side protection add three hinge side bolts for 5 locking points (3/4" frame engagement)
  - SN1 - Sex Nut Kit
  - English Push Plate Sign (Std.)
  - RWS - Spanish Sign
- Other Languages available (call factory for details)
- 96B - Dust Proof Strike
  - DDSK - Double Door Strike Kit
  - 96B-DDS - Dust Proof Strike & Double Door Strike

