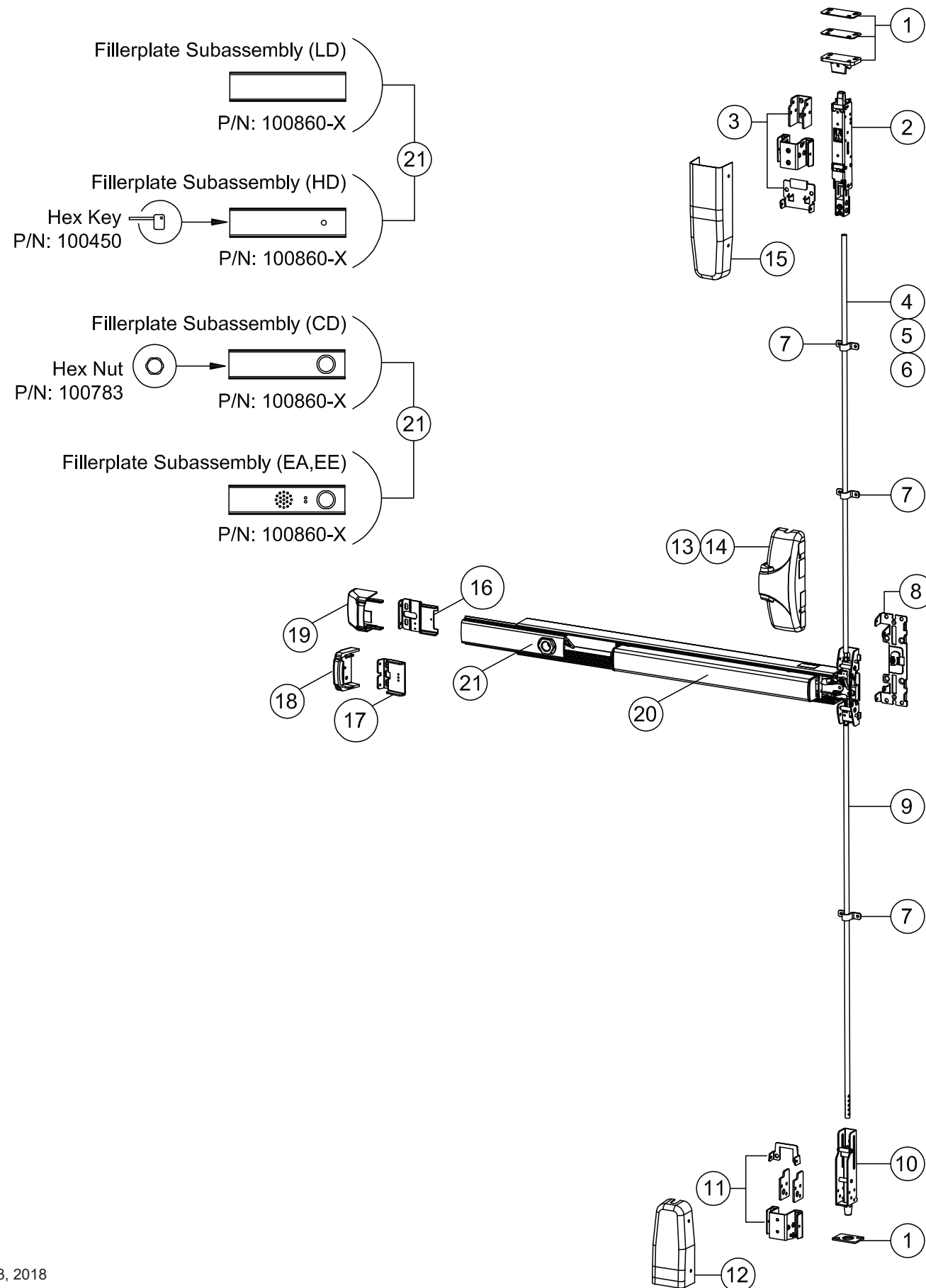


27 Series Parts List



ITEM	DESCRIPTION	Fire	Panic Non-fire	PART NUMBER	List Price
		QTY	QTY		
1	Strike kit, ADV 27	1	1	106405-1	\$ 94.00
2	Top latch assembly, FEMA, SVR	0	1	105984-3	\$ 559.80
	Top latch assembly, FEMA, SVR, Fire	1	0	105984-4	\$ 570.30
3	Top latch mounting kit	1	1	106407-1	\$ 105.70
4	Top rod, SS, 7'	1	1	104051-3	\$ 49.00
	Top rod, SS, 8'			104051-4	\$ 49.00
5	Top rod, ADV 27, Latch side, 10'	1	1	106445	\$
6	Top rod, ADV 27, Device side, 10'	1	1	106446	\$
7	Rod guide kit, ADV 27 (3 rod guide)	1	1	104073-4	\$ 25.00
8	Backplate assembly, wide BP11 (03 cam)	1		104171-1	\$ 51.20
	Backplate assembly, wide BP13 (03 cam)		1	104171-2	\$ 51.60
9	Bottom rod, V50	1	1	103544	\$ 35.16
10	Bottom bolt assembly, SVR, FEMA	1	1	106140	\$ 119.00
11	Bottom latch mounting kit, ADV 27	1	1	106408-1	\$ 76.30
12	Cover, bottom latch, SVR, FEMA	1	1	106148-X	\$
13	Cover, centercase, wide, SVR, SS	1	1	106141-X	\$
14	Cover, centercase, wide, SVR, 628	1	1	104640-13	\$
	Cover, centercase, wide, SVR, 693			104640-14	\$
	Cover, centercase, wide, SVR, 695			104640-15	\$
15	Cover, top latch, SVR, FEMA	1	1	106147-X	\$
16	Endcap mounting bracket, EC1			100147	\$ 10.00
17	Flush endcap mounting bracket, EC2	1	1	104303	\$ 25.00
18	Flush endcap, EC2, AL	1	1	104612-X	\$
	Flush endcap, EC2, AL, FC			104686-X	\$
	Flush endcap, EC2, SS			104304-X	\$
	Flush endcap, EC2, SS, FC			104317-X	\$
19	Endcap assembly, EC1, SS	1	1	101642-X	\$
	Endcap assembly, EC1, SS, FC			102095-X	\$
20	S&R Centercase/Pushpad assy	1	1	105500-X	\$
21	S & R Fillerplate subassembly	1	1	100860-X	\$

* Note: Parts listed will vary according to product configuration. Mortise cylinder available as an option. Standard Yale type cam required. See Mortise cylinder installation page.