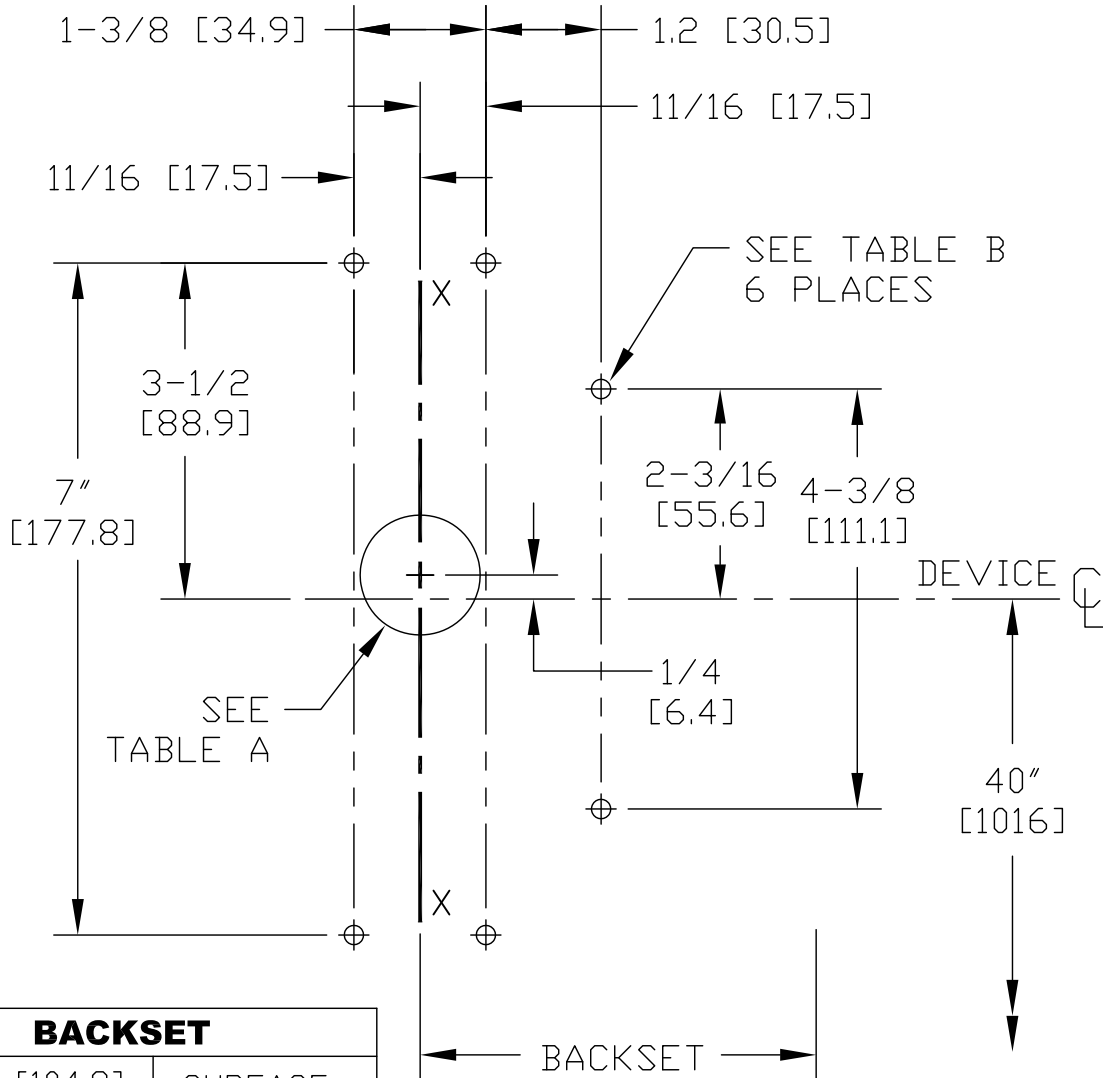


TABLE A	
1-1/4 [31.8] DIAMETER	□KC CYLINDER PLATE
1-5/8 [41.3] DIAMETER	WITH 03 TRIM PLATE

TABLE B	
3/8 [9.5] DIAMETER	SEX BOLTS W/O TRIM PLATE
1/2 [12.7] DIAMETER	WITH 03 TRIM PLATE



BACKSET	
4-1/8 [104.8]	SURFACE
3-5/8 [92.1]	MORTISE

SURFACE & MORTISE INSTALLATION
TRIM SIDE
LHR SHOWN (RHR OPPOSITE)

SCALE: 0.5:1

HDG. _____ DR. _____

RESPONSIBILITY
Door and Frame Manufacturers are responsible for providing adequate construction or reinforcements for proper installation of hardware shown. All architectural builders hardware must be installed on properly reinforced doors and frames regardless of the type, material or method of construction.

SURFACE/MORTISE INSTALLATION
TRIM SIDE
230X EXIT CONTROL LOCK
METAL/ALUMINUM/WOOD DOOR
TEMPLATE



DO NOT SCALE DRAWING

DATE 1-13-16 TEMPLATE NUMBER T2354