

- NOTES:
1. DIMENSIONS SHOWN IN INCHES AND [mm].
 2. 5/8" STOP SHOWN.
 3. 12 GAGE REINFORCEMENT PLATE INSIDE DOOR IS RECOMMENDED AT DEVICE MOUNTING LOCATION.
 4. DRILL PILOT HOLES STRAIGHT & LEVEL THROUGH DOOR AT LOCATIONS "E" & "G".

RESPONSIBILITY

Door and Frame Manufacturers are responsible for providing adequate construction or reinforcements for proper installation of hardware shown. All architectural builders hardware must be installed on properly reinforced doors and frames regardless of the type, material or method of construction.

TEMPLATE
METAL DOOR
ECL-600, LHR
WITH ECL-620 TRIM

HDG. _____ DR. _____

DETEX CORPORATION

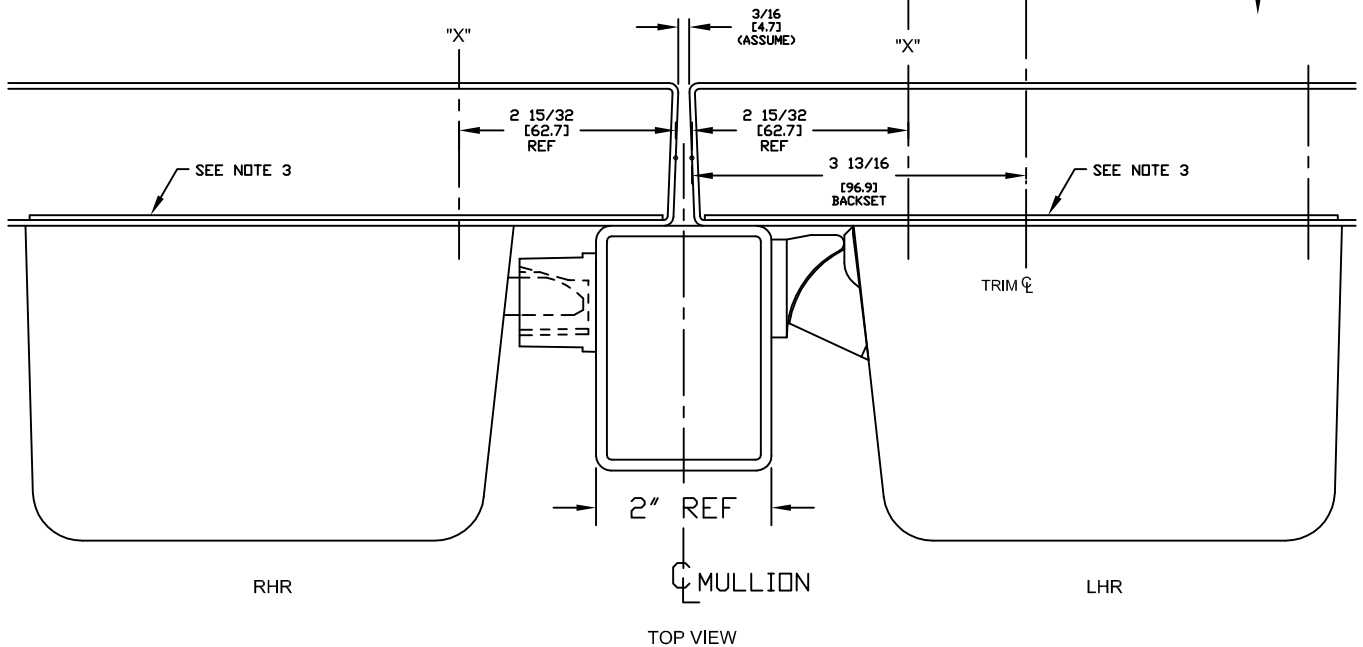
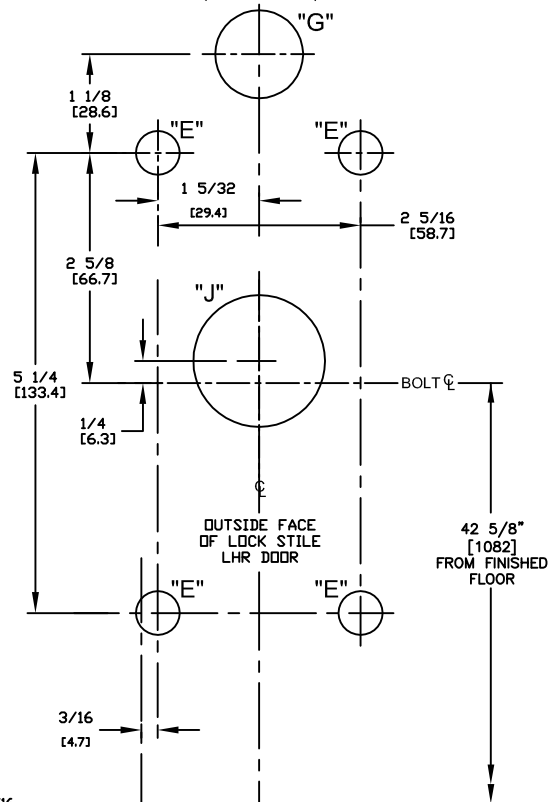
DO NOT SCALE DRAWING

DATE 6-23-17 TEMPLATE NUMBER T2111 page 1 of 2

OUTSIDE TEMPLATE

OUTSIDE
LEFT HAND
REVERSE DOOR
LHR
(SWING OUT)

"E" = 1/2" DRILL
"G" = 1" DRILL
"J" = 1-1/2" DRILL



HDG. _____ DR. _____

DETEx
CORPORATION

DO NOT SCALE DRAWING

DATE 6-23-17

TEMPLATE NUMBER T2111 page 2 of 2

RESPONSIBILITY

Door and Frame Manufacturers are responsible for providing adequate construction or reinforcements for proper installation of hardware shown. All architectural builders hardware must be installed on properly reinforced doors and frames regardless of the type, material or method of construction.

TEMPLATE
METAL DOOR
ECL-600, LHR
WITH ECL-620 TRIM