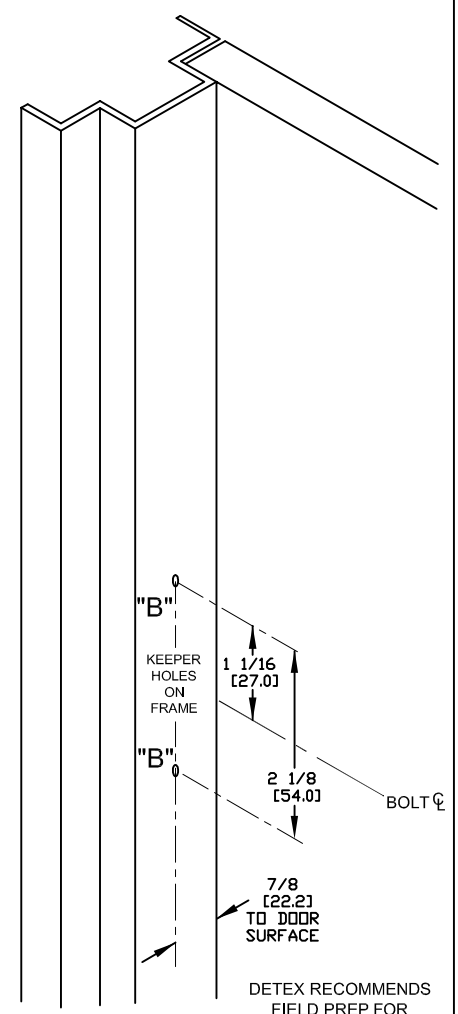


"A" = #18 DRILL (#12 SCREWS)  
 "B" = #25 DRILL (#10 SCREWS)  
 "C" = Ø1-1/4" THRU HOLE (OKC only)



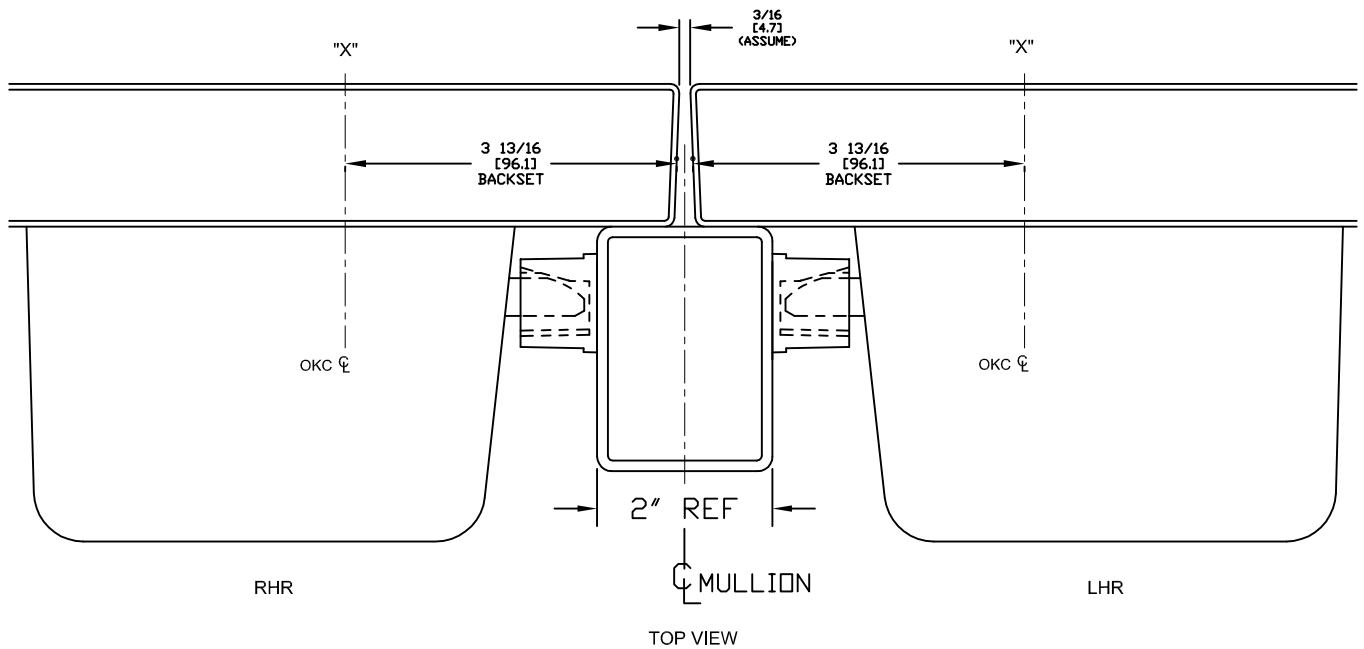
- NOTES:  
 1. DIMENSIONS SHOWN IN INCHES AND [mm].  
 2. 5/8" STOP SHOWN.  
 3. FOR RHR SEE TEMPLATE T2110.

HDG. \_\_\_\_\_ DR. \_\_\_\_\_

RESPONSIBILITY  
 Door and Frame Manufacturers are responsible for providing adequate construction or reinforcements for proper installation of hardware shown. All architectural builders hardware must be installed on properly reinforced doors and frames regardless of the type, material or method of construction.

TEMPLATE  
 METAL DOOR  
 ECL-230D, ECL-230D-PH  
 LHR  
 SURFACE STRIKE

**DETEX CORPORATION**  
 DO NOT SCALE DRAWING  
 DATE 6-12-17 TEMPLATE NUMBER T2109 page 1 of 2



HDG. \_\_\_\_\_ DR. \_\_\_\_\_

**RESPONSIBILITY**  
 Door and Frame Manufacturers are responsible for providing adequate construction or reinforcements for proper installation of hardware shown. All architectural builders hardware must be installed on properly reinforced doors and frames regardless of the type, material or method of construction.

TEMPLATE  
 METAL DOOR  
 ECL-230D, ECL-230D-PH  
 LHR  
 SURFACE STRIKE

**DETEX**  
 CORPORATION

DO NOT SCALE DRAWING

DATE	6-12-17	TEMPLATE NUMBER	T2109 page 2 of 2
------	---------	-----------------	-------------------