

# RELIANT™ PLUS

## Guard Tour Verification System Kit

Reliant PLUS from DETEX provides a complete, simple-to-use solution for guard tour verification and other data-collection tasks. The Reliant PLUS Kit includes everything you need to quickly and easily set up a complete guard tour system that features the rugged Reliant data acquisition unit, stainless steel iButton® touch-memory checkpoints and the user-friendly Reliant PLUS communication and reporting software.

### Reliant Data Acquisition Unit



REL-DAU

The Reliant Data Acquisition Unit (DAU) is a rugged, portable device with no external controls that records and stores readings from the iButton checkpoints, along with the time and date of each reading. The device is protected by an enclosure of glass-reinforced polycarbonate (Lexan®). Successful readings are confirmed both by audible and visible indicators. The Reliant stores 5,460 readings in nonvolatile RAM. The unit will operate for one year or 500,000 readings on three "AAA" batteries, which are user-changeable. The Reliant measures 3.88" x 1.9" x 1.36" (98.5mm x 48mm x 34.5mm) and weighs 5.3 oz. (150g).

### Reliant Data Transfer Unit



REL-DTU

The Reliant Data Transfer Unit (DTU) transfers checkpoint readings from the Reliant DAU to a PC for processing into reports. The REL-DTU connects to the PC via an RS-232 (serial) port or a USB port.

### Touch-Memory iButton® Checkpoints



REL-CKP

The Reliant checkpoints use stainless-steel touch-memory iButtons. Each iButton has a unique 16-digit ID number that identifies the checkpoint, security officer, supervisor, etc. to which it is assigned. The iButtons are assembled into checkpoints using clear polycarbonate shells and mounted with the self-threading screws provided.

### Reliant Incident Book



REL-INCBK

Incidents may be recorded using the Reliant Incident Book. Incidents are pre-defined and assigned numeric codes in the Reliant PLUS software. Incidents observed by the officer are recorded during a tour by entering the incident's code, using the touch-memory keypad.

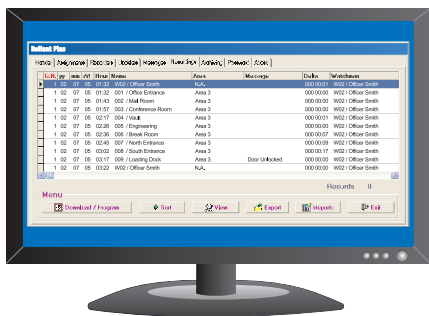
## Reliant PLUS Software



Reliant PLUS is an easy-to-use software application for communicating with and configuring the Reliant DAU, transferring and analyzing your data and producing reports of officers' activities. Its Paradox database provides powerful and flexible reporting features, including:

- Filtered reports
- Performance/Exceptions report
- Missed Stations reports

Reliant PLUS also includes archiving and database management and repair functions.



## Mobile Data Transfer Unit



REL-MDTU

The Reliant Mobile Data Transfer Unit, with a capacity of 21,842 readings, can collect the data from several Reliant DAUs. This makes it unnecessary to take a portable PC to several sites or to bring the DAUs to a central location for downloading.

### iButtons for Officer & Supervisor ID

iButton ID Badges and Keys are used to identify officers or supervisors in the reports, so that responsibility for performance of tasks may be assigned.



ID Badge (REL-BDG)



ID Keys (REL-KF)

## Contents of Kit

- 1 - Reliant Data Acquisition Unit
- 1 - Nylon Holster
- 1 - Reliant Data Transfer Unit
- 1 - Reliant PLUS Software CD, including User Manual (PDF)
- 2 - iButton® ID Keys
- 10 - Checkpoints (including iButtons)
- 1 - Incident Book

### iButton Mounting Options

Other options for mounting iButtons include one-piece mounts in ABS plastic or aluminum.



ABS Mount (REL-CKP-MNT2)



Aluminum Mount (REL-CKP-MNT3)

## Detex Limited Warranty

2-Year Limited Manufacturers Warranty



Detex Corporation  
 302 Detex Drive  
 New Braunfels, Texas 78130-3045 USA  
 PH. (830) 629-2900  
 (800) 729-3839  
 FAX (830) 620-6711  
 (800) 653-3839  
<http://www.detex.com>  
 USA Sales:  
[marketing@detex.com](mailto:marketing@detex.com)  
 International Sales:  
[export@detex.com](mailto:export@detex.com)