

Detex Corporation, 302 Detex Drive, New Braunfels, Texas 78130-3045
 (830)629-2900 / 1-800-729-3839 / Fax (830)620-6711
 E-MAIL: detex@detex.com INTERNET: www.detex.com

INSTALLATION INSTRUCTIONS FOR THE REDI-KEY ACCESS VAULT

The key vault can be installed at any convenient location on a door. Consideration must be given to possible interference with door closers and other hardware.

Check local building codes for installation restrictions.

Note

Because of the variations in door construction, we cannot specify where to locate the vault.

Once the position has been selected, locate and mark the center on both sides of the door by measuring from the top and side. There are several ways to measure for the center location but, regardless of the method, **the important thing is to make sure that the holes are in line.**

Because of the reinforcement in a metal door, the center of the vault should be at least 8" from the edge of the door.

See page 3 for suggested cinderblock installation.

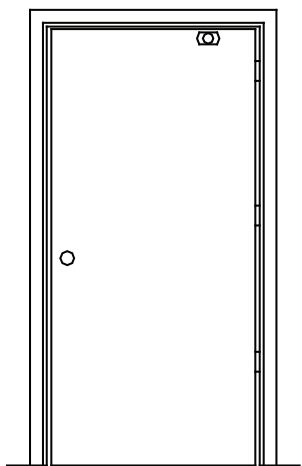


FIGURE 1 INSIDE VIEW

TOOLS REQUIRED

- Center punch.
- Hammer.
- Drill motor
- #27(.144) drill bit.
- 1-3/4" diameter hole saw (with a pilot drill is recommended).
- File to deburr the hole.
- Rat-tail or rotary file to enlarge the 1-3/4" hole if necessary.
- Screwdriver (flat and Phillips).

Equivalent metric dimensions

INCHES	MILLIMETERS
1-3/4	44
0.144	4
1/16	2

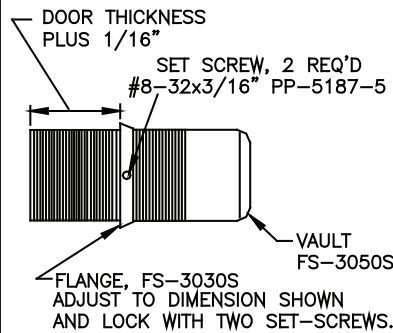


FIGURE 2

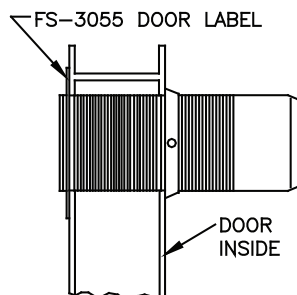


FIGURE 3

Produce a pilot hole through both sides of the door for the 1-3/4" hole. Since you will need a #27 drill bit for the mounting holes, you might want to use it for the pilot holes as well. Because of the difficulty of producing 1-3/4" diameter holes from two directions that are in line, it is very likely that some amount of filing may be necessary to assure that the flange sits flush on the door. Since the flange will cover the inside hole, any **filing should be done on the inside only.** The following procedure is recommended. Use a **SHARP** hole saw and produce the **OUTER** hole first and deburr it. Produce the inside hole and insert the vault/flange assembly to determine if the flange sits flush on the door. **File the inside hole as required until the flange sits flush.**

Insert the vault/flange assembly in the door from the inside. Make sure that the flange is parallel to the edge of the door rail. Drill the two #27 mounting holes using the flange as the locator. Fasten the assembly to the door with two one-way screws and lockwashers.

Install the label on the outside of the door. Remove the center part of the label and paste it on the door close to the vault.

INSTALLING THE CYLINDER

- *Obtain the building key from the owner and attach it to the key extractor.
- *Install the teflon ring.
- *Insert the key (FS-3059) in the cylinder. (Key must be ordered separately)
- *Turn the key clockwise to a stop.
- *Place the cylinder in the vault.
- *Place thumb on cylinder to prevent rotation.
- *Turn the key counterclockwise to a stop and remove the key.
- *NOTE: Advise the owner that he/she must notify the fire department when rekeying or changing locks.

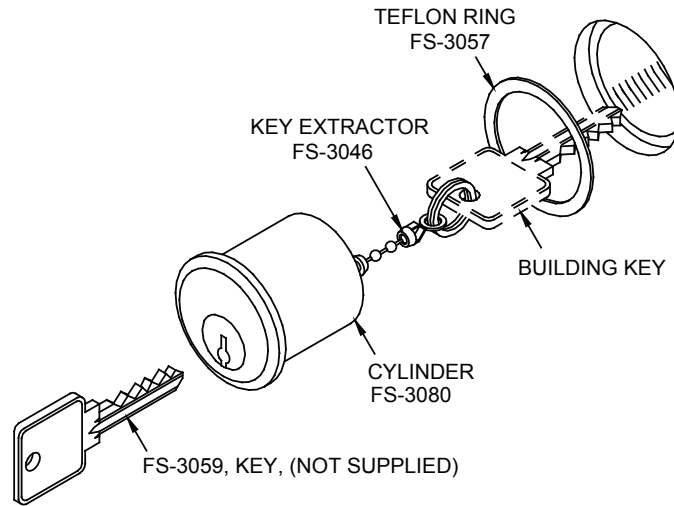


FIGURE 4

NOTE
The key extractor is attached to the cylinder at the factory. If the key extractor has to be replaced, attach it to the cylinder as shown in figure 5.

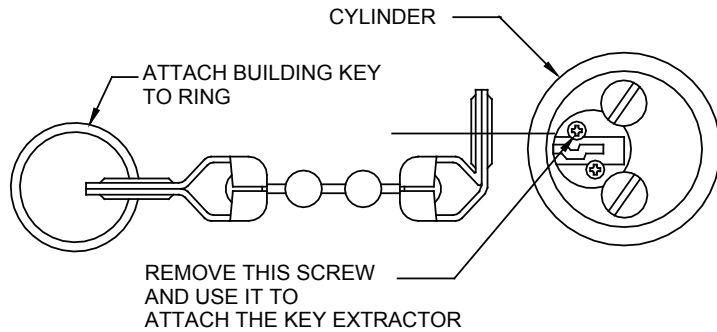
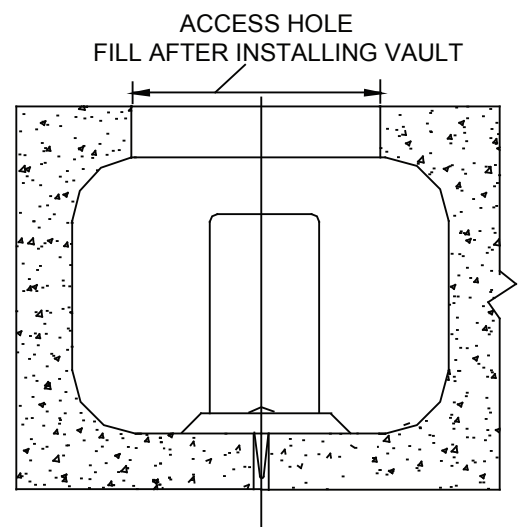
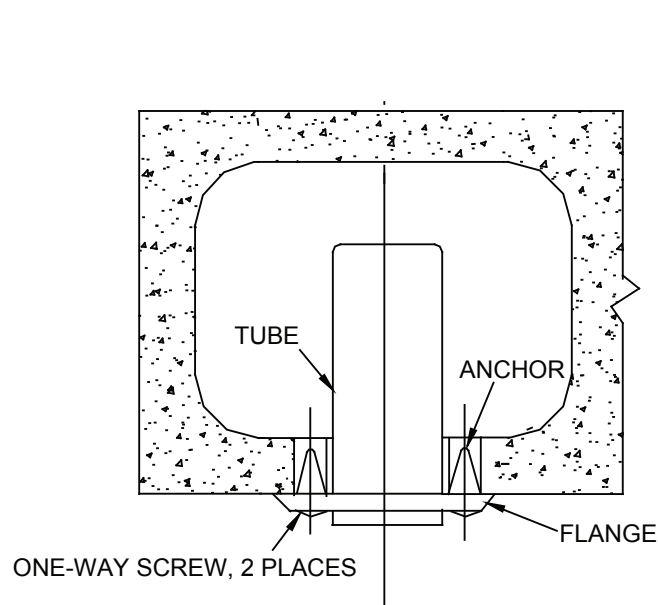


FIGURE 5



SUGGESTED METHODS OF INSTALLATION

TOOLS AND SUPPLIES

- *1-3/4" diameter carbide hole saw. (See McMaster's catalog)
- *1/4" masonry drill bit
- *Drill motor
- *Screwdriver, 5/16" blade
- *Marking pen or center punch
- *#14x1" plastic masonry anchors
- *Rockite® anchoring and patching material

- 1) Mark center of hole for vault (Center the vault in a cored space).
- 2) Drill a 1-3/4" hole.
- 3) Adjust and lock the flange with 2 set-screws. The vault should protrude about 1/16" from the flange.
- 4) Place the vault in the hole.
- 5) Position the flange and mark the centers for the two mounting holes.
- 6) Remove the vault and flange and drill two holes, 1/4" diameter x 1-1/2" deep.
- 7) Drive plastic anchors into holes.
- 8) Apply a liberal amount of patching material around vault and in the hole.
- 9) Install vault and fasten with two one-way screws and lockwashers

Medeco Cylinder Lubrication

Approved Products

Medeco® KeyLube™ 2.0 Multi-purpose Lubricant
PX-KYLUB2-03 (1.5 oz.) Aerosol can with spray tube
PX-KYLUB2-16 (16 oz.) Large spray bottle sold in cases of nine

Sandstrom® Poxylube® CP-200 Air Drying Solid Film Lubricant
Poxylube CP-200 (4.5 oz.) Aerosol can with spray tube

Synco® Super Lube® Dri-Film Lubricant
Super Lube Dri-Film (11 oz.) Aerosol can with spray tube

Where to Order:

Medeco KeyLube
Medeco Customer Service 1-800-839-3157

Poxylube CP-200
<http://www.sandstromproducts.com> or 1-800-747-1084

Super Lube Dri-Film
<http://www.super-lube.com> or 1-800-253-LUBE (5823)

How to Lubricate:

No other lubricants should be used with Medeco Key Lube. Locks that are dirty or oily should be cleaned with an electrical contact cleaner such as the one made by LPS or those available at Radio Shack stores. Extremely dirty or oily locks may have to be completely disassembled as part of the cleaning procedure. It is recommended that only Medeco Factory Certified Locksmiths take apart Medeco cylinders.

*Shake can well and with opening on white nozzle pointing away from face, insert the red plastic spray tube into the end of the white nozzle.

*Place the red plastic spray tube against the keyhole and press down on the white nozzle using three, one second bursts of spray.

*Allow the lubricant to penetrate the cylinder 10 seconds before inserting key. Wipe the face of the cylinder with a rag if over-spray coats the face of the lock.

How Often to Lubricate:

Frequency of lubrication depends on location of the cylinder, weather conditions and amount of use. A lock installed on an interior door that is only used a couple of times a day should be lubricated once a year. A lock installed on the exterior entrance door of an apartment with several hundred tenants and freezing weather conditions should be lubricated at least 4 times a year or anytime the key is difficult to insert or turn.

Warranty:

Medeco is not responsible for damage to the lock caused by foreign matter other than Medeco approved lubricants or by accident, theft, misuse, abuse, or abnormal use or conditions.