



Detex Corporation, 302 Detex Drive, New Braunfels, Texas 78130-3045
 830-629-2900 / 800-729-3839 / Fax 800-653-3839 / Text photos only: 830-481-6433 / INTERNET: www.detex.com

INSTALLATION INSTRUCTIONS FOR ADVANTEX NARROW TRIM

OUTSIDE LEVER TRIM 08, 09, 14
 (drawing 101446: 08 Trim - includes 08DN, 08DNT, 08DNU, 08DNU)
 (drawing 101995: 09 Trim - includes 09DN, 09DNT, 09DNU, 09DNU)
 (drawing 101448: 14 Trim - includes 14DN, 14DNT, 14DNU, 14DNU)

Table of Contents	Page
Device parts breakdown view.....	2
Device parts breakdown list with part numbers.....	3
Prep Trim, Prep Door	4
Install Trim.....	5
Rehanding.....	6

Should you have a Question/Problem with your Detex device please call Detex Technical Support from job site at 1-800-729-3839 and choose option 2 on our menu. Please do not return the product to the distributor.

**For WARRANTY information,
 scan code below or
 go to www.detex.com/warranty**

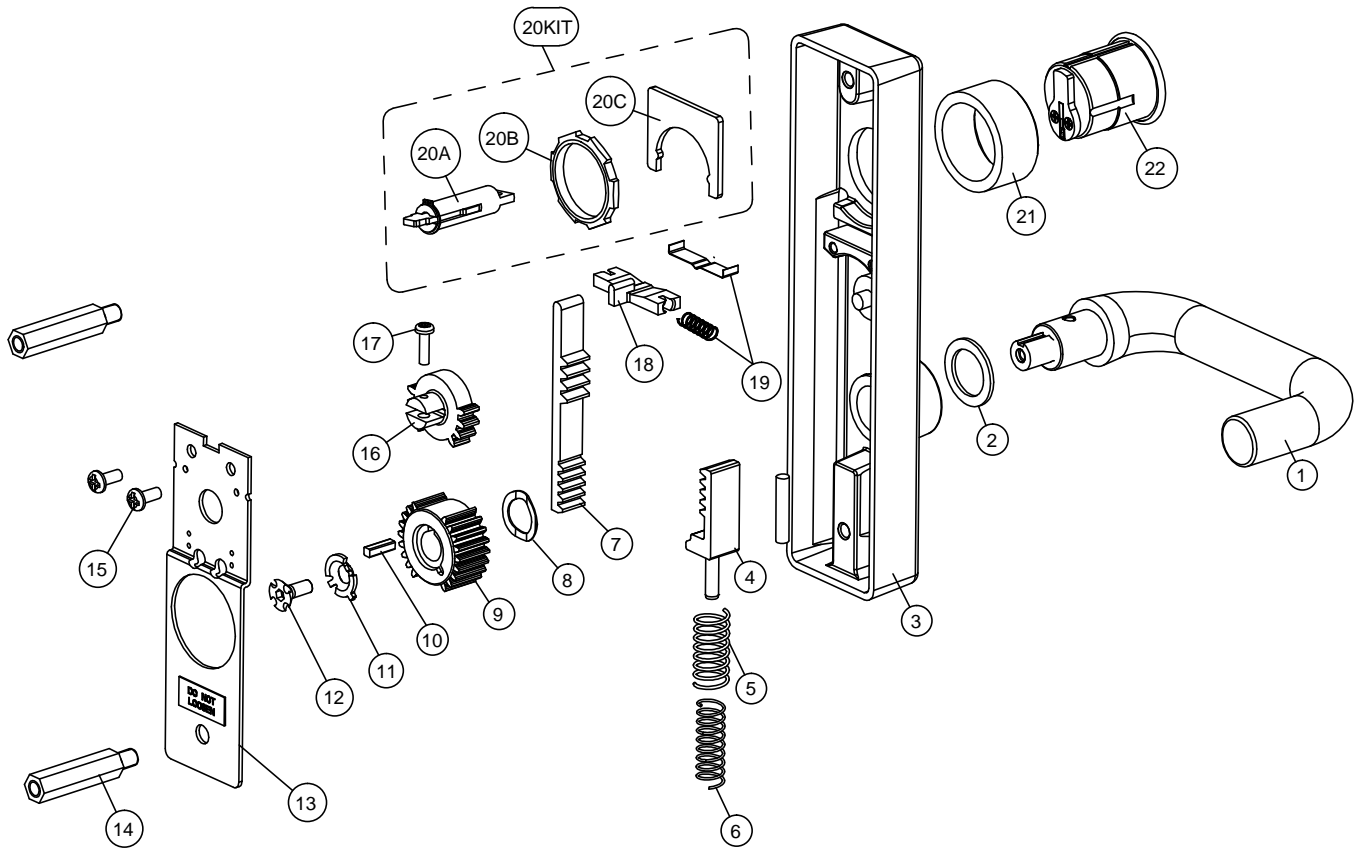


**For device installation videos,
 scan code below or
 go to www.detex.com/videos**



Owner's Copy

LHR ASSEMBLIES SHOWN
RHR assemblies opposite



PARTS BREAKDOWN			
Item	P/N	QTY	Description
1	106264-7	1	LEVER ASSY, Q, 626
	106264-14		LEVER ASSY, Q, 693
	106264-15		LEVER ASSY, Q, 695
	101376-7		LEVER ASSY, S, 626
	101376-14		LEVER ASSY, S, 693
	101376-15		LEVER ASSY, S, 695
	101375-7		LEVER ASSY, U, 626
	101375-14		LEVER ASSY, U, 693
	101375-15		LEVER ASSY, U, 695
	101374-7		LEVER ASSY, T, 626
	101374-14		LEVER ASSY, T, 693
	101374-15		LEVER ASSY, T, 695
	2		100851
3	100745-9	1	ESCUTCHEON ASSY, 08DN / 09DN, BP2, 630
	101448-9		ESCUTCHEON ASSY, 14DN, BP2, 630
4	101457	1	SPRING RACK ASSEMBLY
5	100877	1	SPRING, COMPRESSION, TRIM, NARROW
6	101510	1	SPRING, HELPER, RETURN-NARROW
7	100865	1	RACK, NARROW
8	105124-1	1	WAVE WASHER, .694 DIAMETER
9	103010	1	GEAR & TORQUE PLATE, NON-CLUTCHING
10	100774	1	KEY, SHEARPIN
11	100821	1	CLUTCH WASHER
12	102536-1	1	SCREW, 10-24 x 17/32 FH SOCKET CAP
13	100866	1	PLATE, COVER
14	100777	2	STANDOFF, HEX
	105233		STANDOFF, HEX, CVR LEVER TRIM, NARROW
15	PP-5378-106	2	SCREW, 8-32 x 3/8 PPH
16	100762	1	TOP GEAR
17	PP-5367-108	1	SCREW, 6-32 x 1/2 PPH
	PP-5367-110		SCREW, 6-32 x 5/8 PPH SEMS (LS trim)
18	101994	1	SLIDE LOCK, NARROW
19	100773	1	FLAT SPRING, LOCKING (08 function only)
	101997		SPRING, COMPRESSION (09 function only)
20KIT	105673-4	1	LEVER TRIM HARDWARE KIT, 08DN/09DN (STD, SVR)
	105673-5		LEVER TRIM HARDWARE KIT, 08DNV/09DNV (CVR)
20A	101478	1	SHAFT EXTENSION ASSEMBLY (RIM, SVR)
	106694		TAILPIECE ASSEMBLY, D TRIM (CVR)
20B	100783	1	CYLINDER NUT, HEX
20C	100868	1	PLATE, CYLINDER POSITION, NARROW
21	100572-9	1	CYLINDER COLLAR, SHORT
	100752-9		CYLINDER COLLAR, TALL
22	102281-7-X	1	CYLINDER, MORTISE, 5 PIN, CHROME
	103800-626		CYLINDER, HOUSING, SFIC, MORTISE, 7 PIN, CHROME
	102287-7-DS		CYLINDER, MORTISE 6 PIN DS 26D (626)

Tools Required:

Safety Glasses

Power Drill

Tape Measure

Level

Pencil

Center Punch

#2 and #3 Phillips Screw Drivers

Drill bits:

5/16"

3/8"

1/2"

5/8"

3/4"

FOR ITEM 22
"-X" REFERS TO
KEY CODE
AA-KK

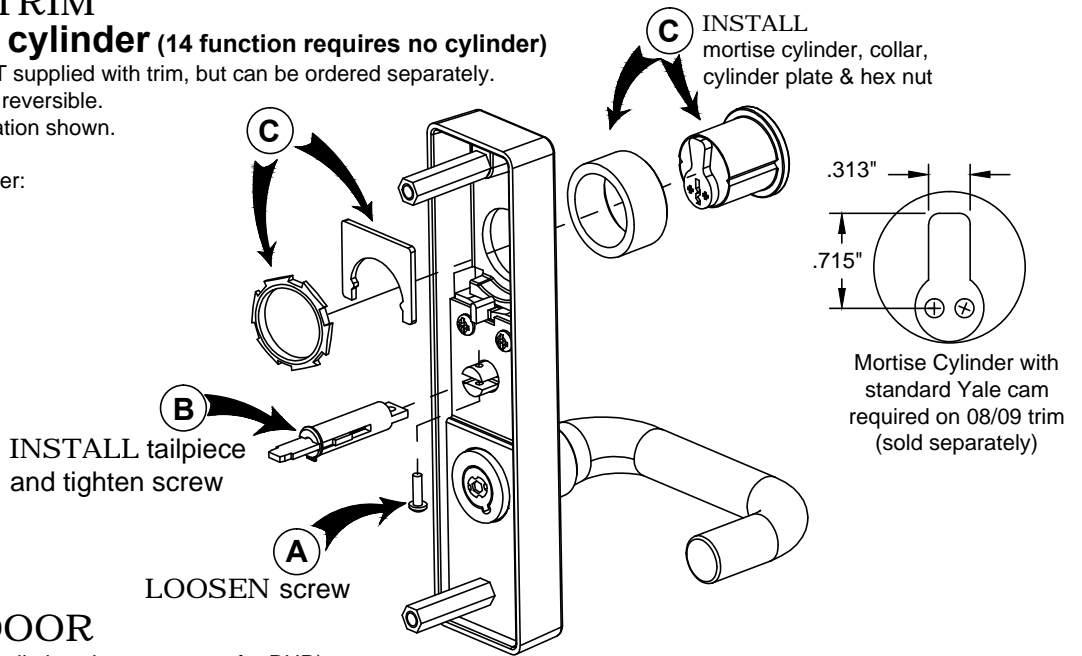
Your particular part or configuration may not be shown:
Contact Detex technical support at 800-729-3839 (option 2)

STEP 1: PREP TRIM

Install tailpiece & cylinder (14 function requires no cylinder)

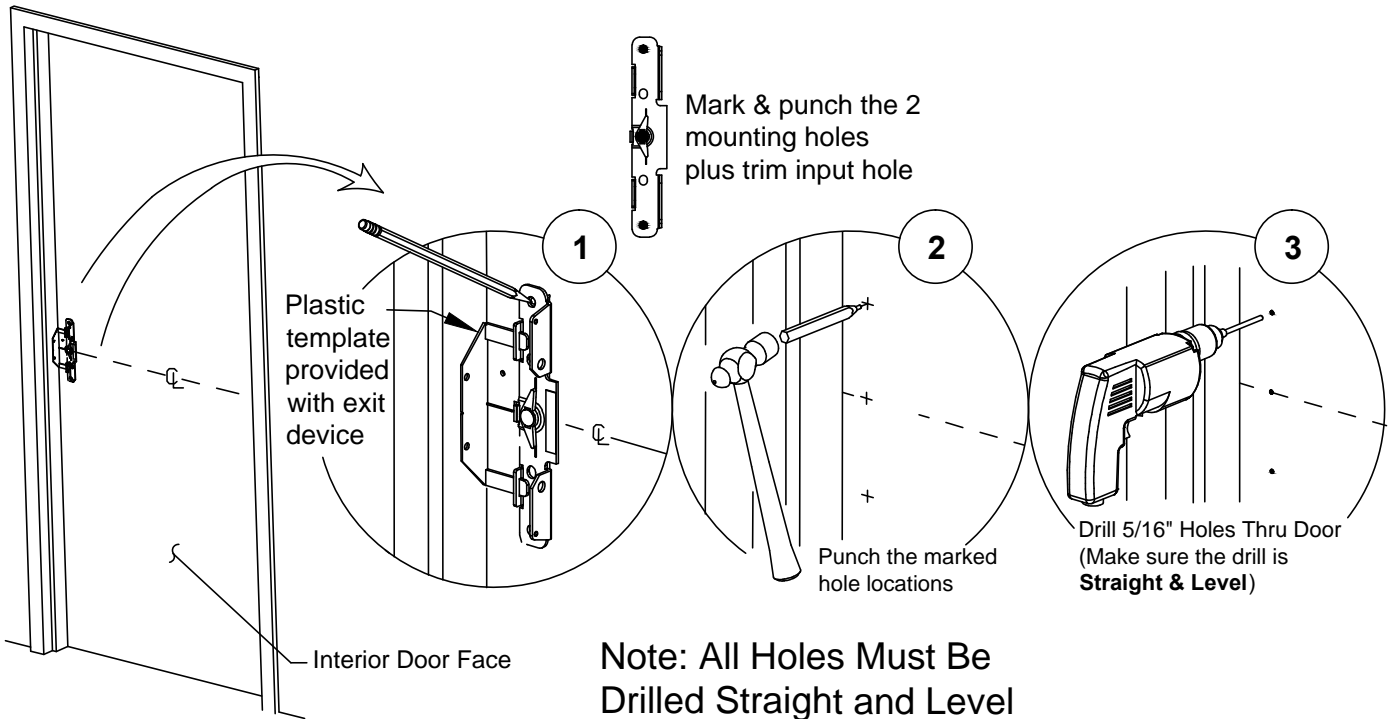
- NOTE: 1. Mortise cylinder NOT supplied with trim, but can be ordered separately.
 2. Trim handing is field reversible.
 3. 6-pin cylinder installation shown.

Follow steps A through C in order:

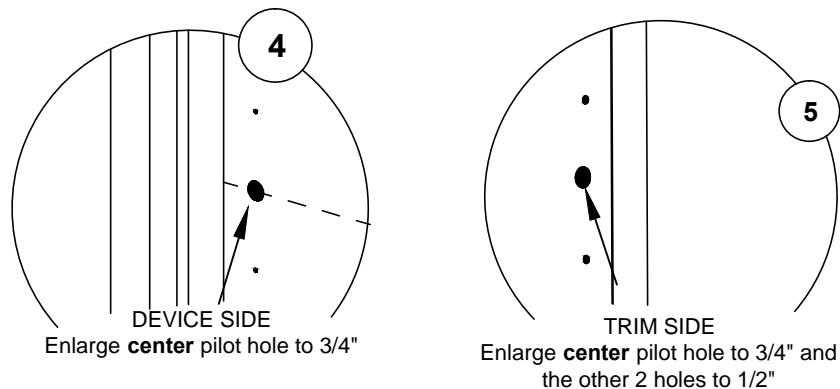


STEP 2: PREP DOOR

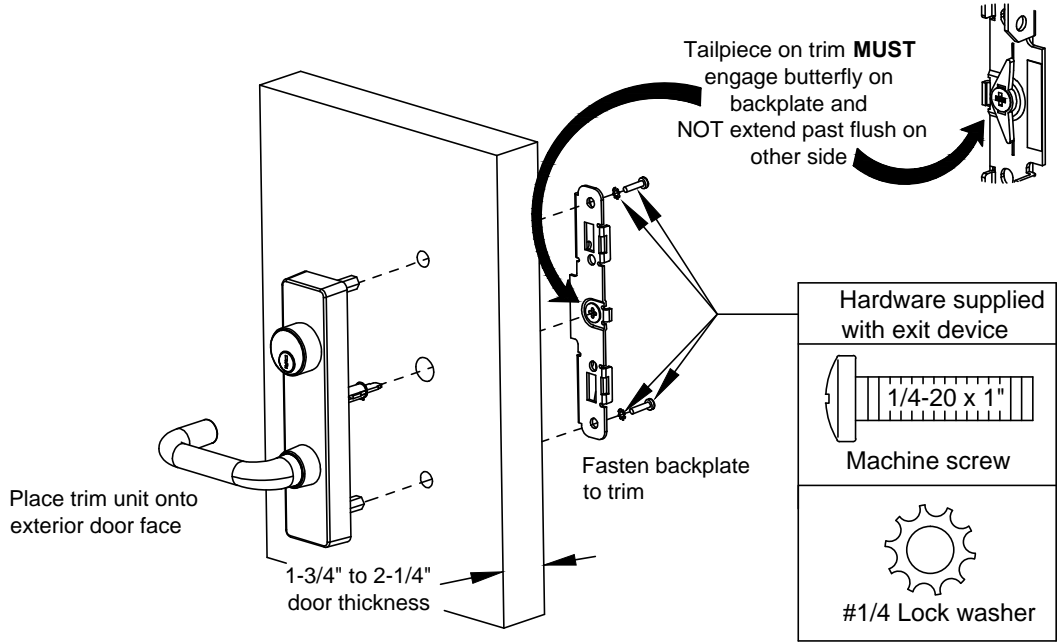
Mark and drill holes. (LHR installation shown, reverse for RHR)



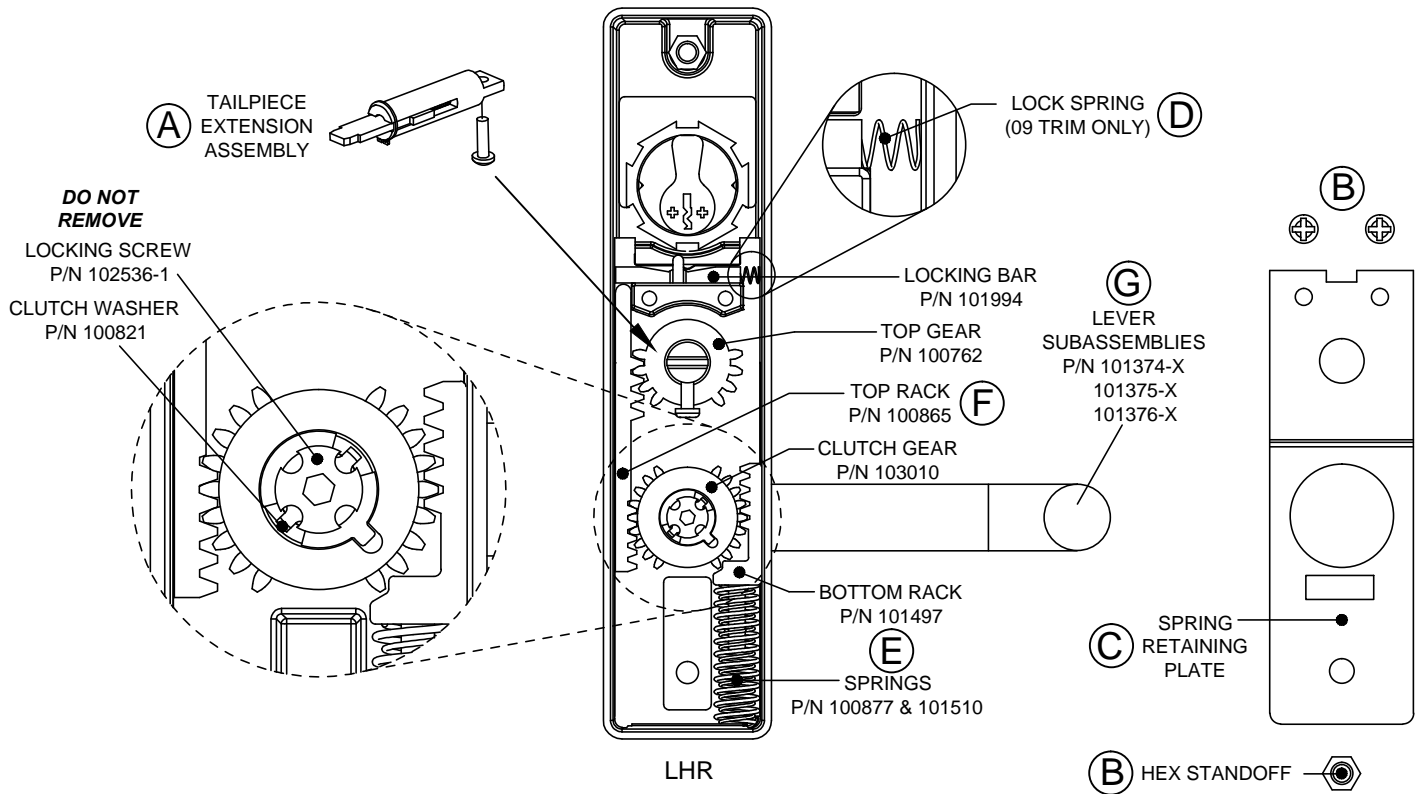
Note: All Holes Must Be Drilled Straight and Level



STEP 3: INSTALL TRIM



TRIM INSTALLATION COMPLETE
Continue installation using device instructions



TO CHANGE LEVER HANDING:

- A. Remove tailpiece extension assembly & retaining screw (if present).
- B. Remove the hex standoff and the two (2) screws holding the spring retaining plate.

C. WARNING: Springs under pressure!
Remove spring retaining plate.

D. Switch lock spring to opposite side (for 09 Function only).

E. Carefully remove the springs and bottom rack.

F. Remove the top rack.

G. Rotate lever to opposite side.

H. Engage the top rack on the opposite side as shown.

I. Engage the bottom rack on the opposite side as shown.

J. Install springs on the bottom rack.

K. Replace spring retaining plate and fasten the two (2) screws and the the standoff.

L. Replace tailpiece extension assembly and screw.
Handing complete.

