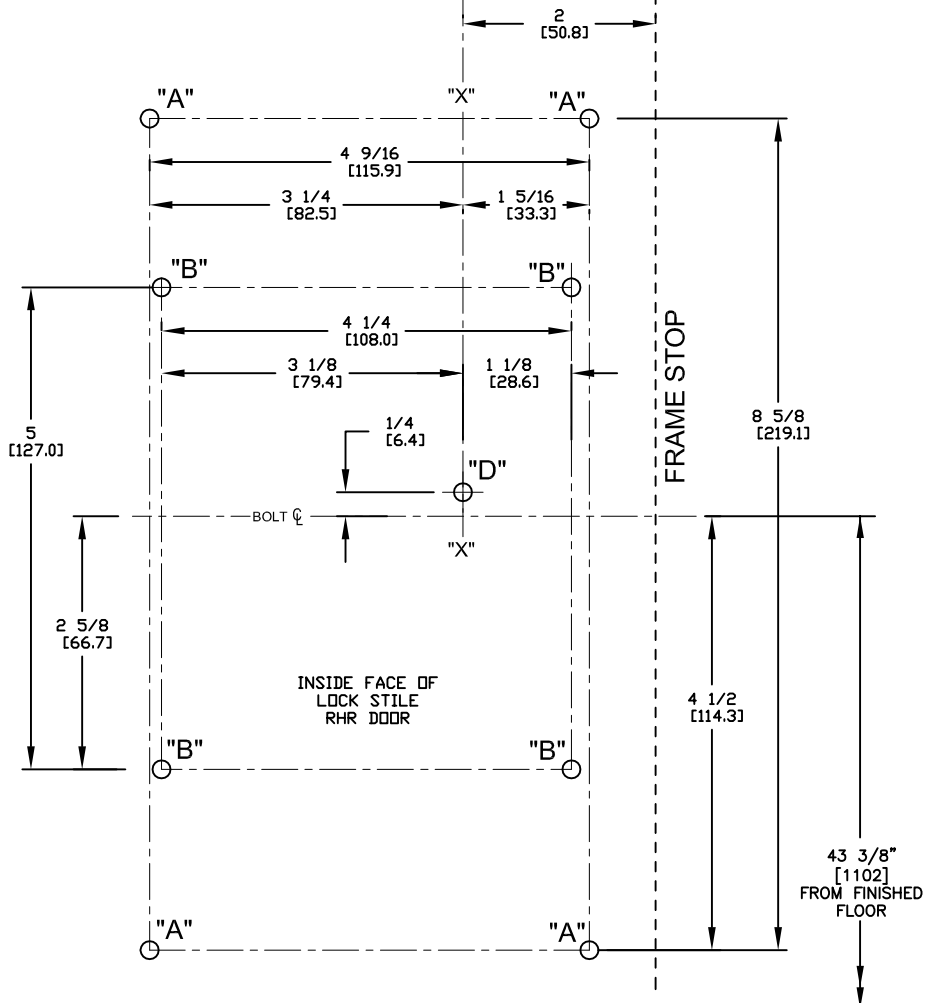
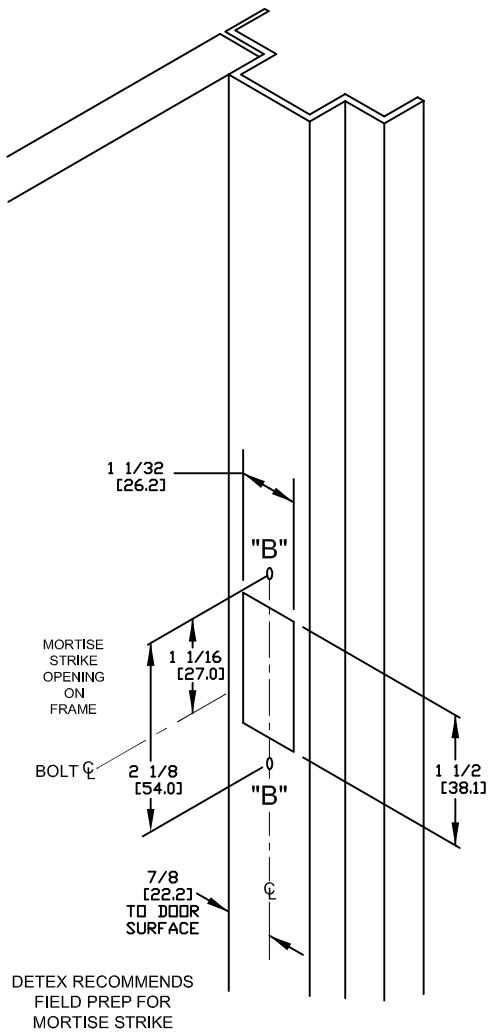
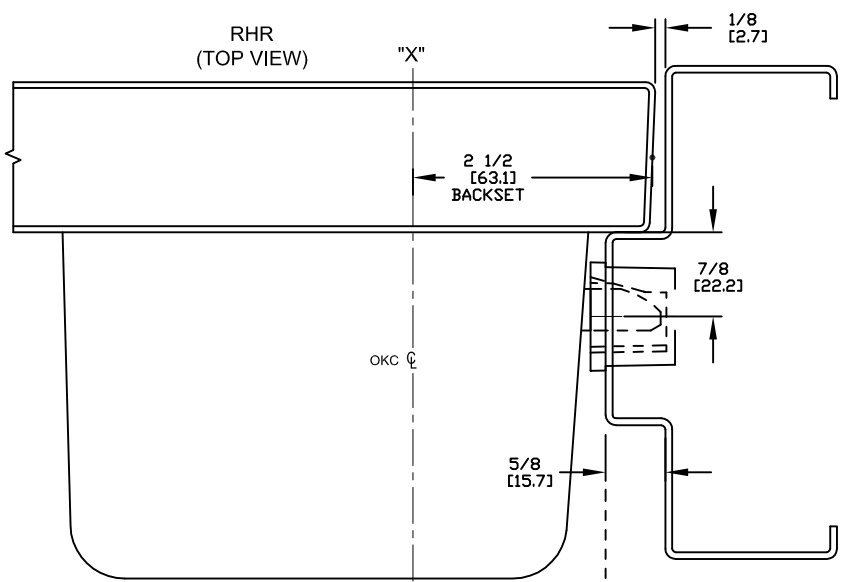


"A" = #18 DRILL (#12 SCREWS)  
 "B" = #25 DRILL (#10 SCREWS)  
 "D" = Ø1-1/4" THRU HOLE (OKC only)

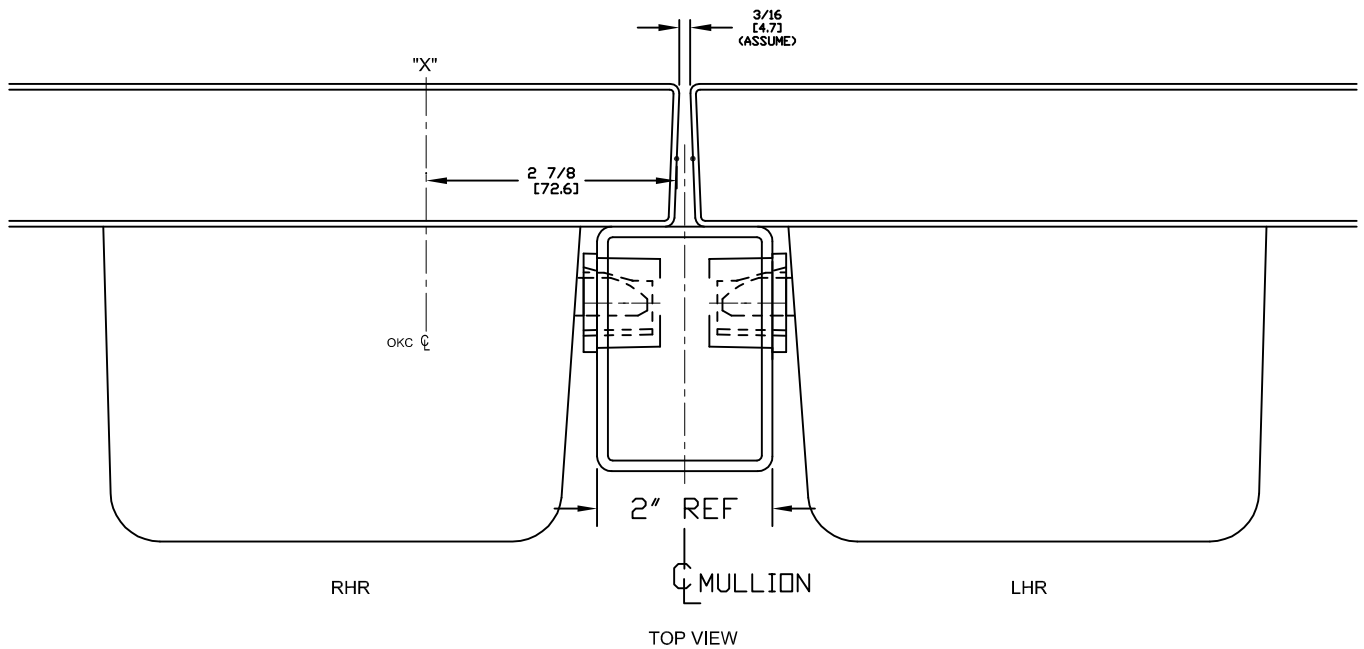


- NOTES:  
 1. DIMENSIONS SHOWN IN INCHES AND [mm].  
 2. 5/8" STOP SHOWN.  
 3. FOR LHR SEE TEMPLATE T2115.

HDG. _____ DR. _____	
<b>DETEX CORPORATION</b>	
DO NOT SCALE DRAWING	
DATE 6-12-17	TEMPLATE NUMBER T2116 page 1 of 2

**RESPONSIBILITY**  
 Door and Frame Manufacturers are responsible for providing adequate construction or reinforcements for proper installation of hardware shown. All architectural builders hardware must be installed on properly reinforced doors and frames regardless of the type, material or method of construction.

TEMPLATE  
 METAL DOOR  
 ECL-230D, RHR  
 MORTISE STRIKE



HDG. \_\_\_\_\_ DR. \_\_\_\_\_

**RESPONSIBILITY**  
 Door and Frame Manufacturers are responsible for providing adequate construction or reinforcements for proper installation of hardware shown. All architectural builders hardware must be installed on properly reinforced doors and frames regardless of the type, material or method of construction.

TEMPLATE  
 METAL DOOR  
 ECL-230D, RHR  
 MORTISE STRIKE

**DETEX**  
 CORPORATION

DO NOT SCALE DRAWING

DATE 6-12-17

TEMPLATE NUMBER T2116 page 2 of 2