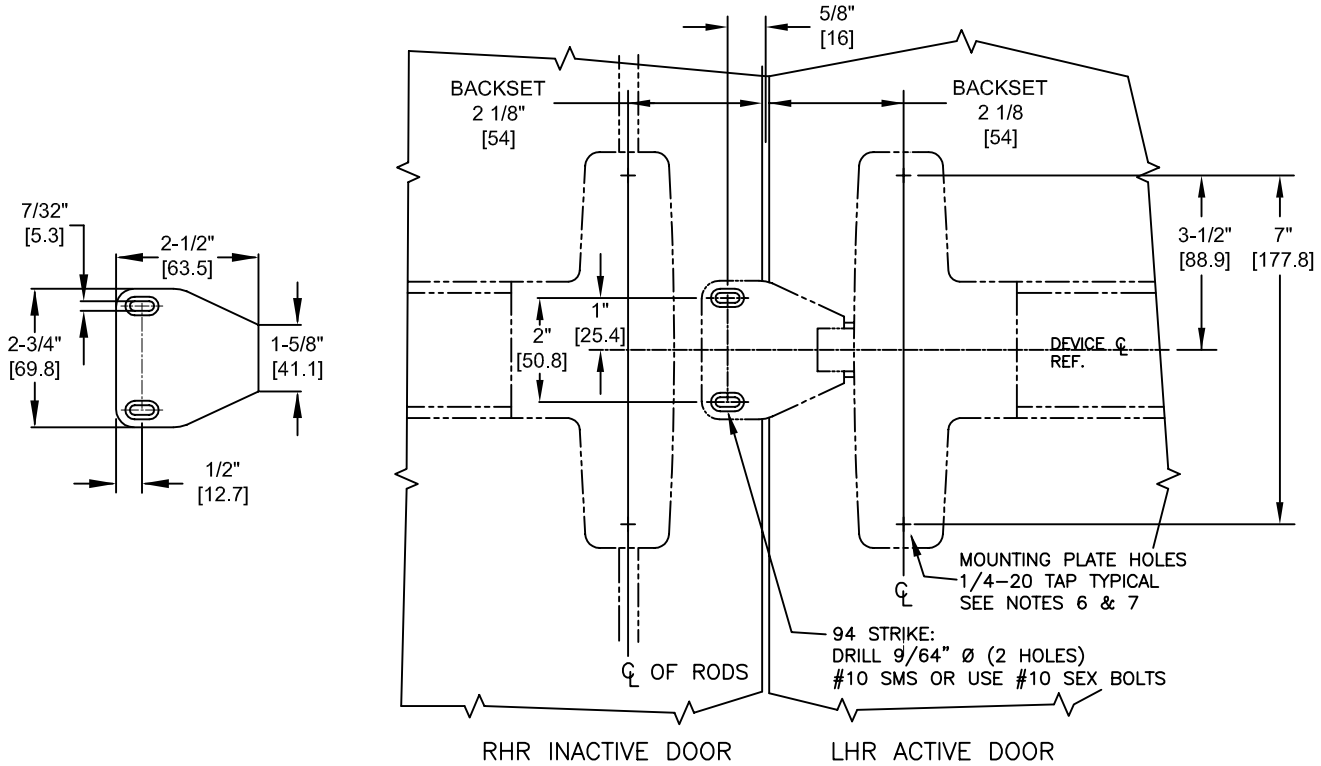
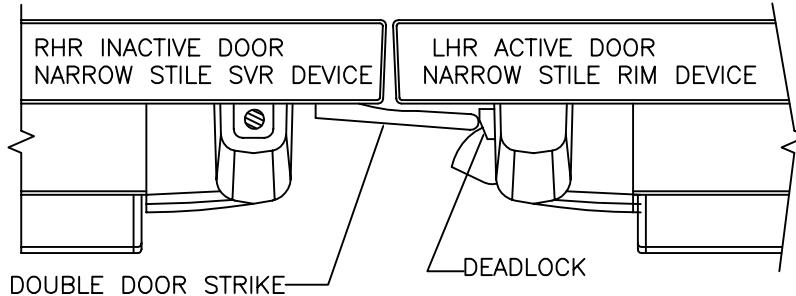


NOTES:

1. DO NOT SCALE DRAWING.
2. DIMENSIONS ARE IN INCHES [mm].
3. REVERSE FOR OPPOSITE HANDING.
4. MINIMUM STILE WIDTH: 3-1/2" [88.9].
5. SEE DOOR REINFORCEMENTS REQUIRED ON T1000 FOR STEEL DOOR
6. IF REQUIRED: THRU-BOLT HOLE SIZE
9/32" INTERIOR DOOR FACE
3/8" EXTERIOR DOOR FACE.
7. IF OUTSIDE TRIM IS REQUIRED, REFER TO OUTSIDE TRIM TEMPLATE.



NOTE: FOR DEVICE FUNCTION AND OTHER DIMENSIONS, SEE APPROPRIATE DEVICE AND/OR TRIM INSTRUCTIONS



NARROW STILE SHOWN. SEE T1166 FOR WIDE STILE.

HDG. _____ DR. _____

RESPONSIBILITY

Door and Frame Manufacturers are responsible for providing adequate construction or reinforcements for proper installation of hardware shown. All architectural builders hardware must be installed on properly reinforced doors and frames regardless of the type, material or method of construction.

TEMPLATE
DOUBLE DOOR WITH 94 STRIKE
DEVICES 40, 50, V40, V50
METAL DOORS

DETEX
CORPORATION

DO NOT SCALE DRAWING

DATE 4-9-09

TEMPLATE NUMBER T1165